

A22173

Leader in Biomolecular Solutions for Life Science



Pituitary homeobox 2 (PITX2) Rabbit mAb

Catalog No.: A22173

Recombinant

Basic Information

Observed MW

37kDa

Calculated MW

35kDa

Category

SMab Recombinant Monoclonal Antibody

Applications

WB, ELISA

Cross-Reactivity

Human

CloneNo number

ARC56103

Background

This gene encodes a member of the RIEG/PITX homeobox family, which is in the bicoid class of homeodomain proteins. The encoded protein acts as a transcription factor and regulates procollagen lysyl hydroxylase gene expression. This protein plays a role in the terminal differentiation of somatotroph and lactotroph cell phenotypes, is involved in the development of the eye, tooth and abdominal organs, and acts as a transcriptional regulator involved in basal and hormone-regulated activity of prolactin. Mutations in this gene are associated with Axenfeld-Rieger syndrome, iridogoniodysgenesis syndrome, and sporadic cases of Peters anomaly. A similar protein in other vertebrates is involved in the determination of left-right asymmetry during development. Alternatively spliced transcript variants encoding distinct isoforms have been described.

Recommended Dilutions

WB 1:1000 - 1:5000

Immunogen Information

Gene ID

5308

Swiss Prot

Q99697

Immunogen

A synthetic peptide corresponding to a sequence within amino acids 1-100 of human Pituitary homeobox 2 (PITX2) (NP_700475.1).

Synonyms

RS; RGS; ARP1; Brx1; IDG2; IGDS; IHG2; PTX2; RIEG; ASGD4; IGDS2; IRID2; Otlx2; RIEG1; Pituitary homeobox 2 (PITX2)

Contact



www.abclonal.com

Product Information

Source

Rabbit

Isotype

IgG

Purification

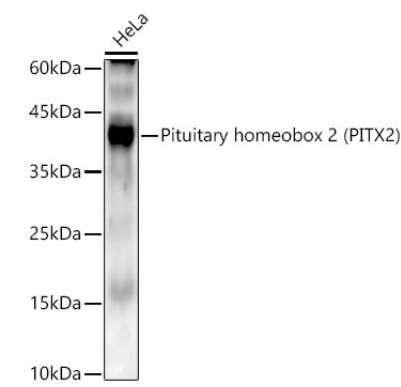
Affinity purification

Storage

Store at -20°C. Avoid freeze / thaw cycles.

Buffer: PBS with 0.05% proclin300, 0.05% BSA, 50% glycerol, pH7.3.

Validation Data



Western blot analysis of HeLa, using Pituitary homeobox 2 (PITX2) antibody (A22173) at1:2000 dilution.
Secondary antibody: HRP Goat Anti-Rabbit IgG (H+L) (AS014) at 1:10000 dilution.
Lysates/proteins: 25µg per lane.
Blocking buffer: 3% nonfat dry milk in TBST.
Detection: ECL Enhanced Kit (RM00021).
Exposure time: 90s.