

A22157

Leader in Biomolecular Solutions for Life Science



# ABflo® 647 Rabbit anti-Human/Mouse CD276/B7-H3 mAb

Catalog No.: A22157

## Basic Information

### Observed MW

Refer to figures

### Calculated MW

33kDa/52kDa/57kDa

### Category

SMab Recombinant Monoclonal Antibody

### Applications

FC

### Cross-Reactivity

Human, Mouse

### CloneNo number

ARC54779-ABf647

### Conjugate

ABflo® 647. Ex:648nm. Em:664nm.

## Background

The protein encoded by this gene belongs to the immunoglobulin superfamily, and thought to participate in the regulation of T-cell-mediated immune response. Studies show that while the transcript of this gene is ubiquitously expressed in normal tissues and solid tumors, the protein is preferentially expressed only in tumor tissues. Additionally, it was observed that the 3' UTR of this transcript contains a target site for miR29 microRNA, and there is an inverse correlation between the expression of this protein and miR29 levels, suggesting regulation of expression of this gene product by miR29. Alternatively spliced transcript variants encoding different isoforms have been found for this gene.

## Recommended Dilutions

FC 5 µl per 10<sup>6</sup> cells in  
100 µl volume

## Immunogen Information

### Gene ID

80381

### Swiss Prot

Q5ZPR3

### Immunogen

Recombinant fusion protein containing a sequence corresponding to amino acids 29-245 of human CD276 mAb (NP\_079516.1).

### Synonyms

B7H3; B7-H3; B7RP-2; 4Ig-B7-H3

## Contact



[www.abclonal.com](http://www.abclonal.com)

## Product Information

### Source

Rabbit

### Isotype

IgG

### Purification

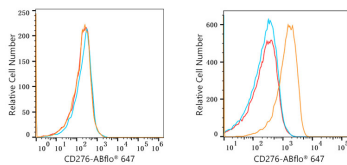
Affinity purification

### Storage

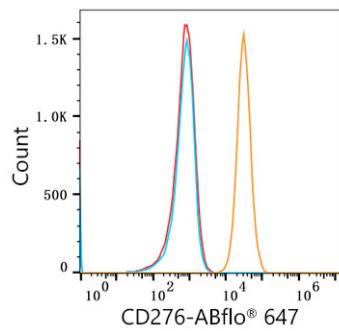
Store at 2-8°C. Avoid freeze.

Buffer: PBS with 0.03% proclin300, 0.2% BSA, pH7.3.

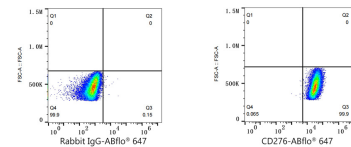
## Validation Data



Flow cytometry:  $1 \times 10^6$  Jurkat cells (negative control, left) and PC-3 cells (right) were surface-stained with ABflo® 647 Rabbit anti-Human CD276/B7-H3 mAb (A22157, 5  $\mu$ l/Test, orange line) or ABflo® 647 Rabbit IgG isotype control (A22070, 5  $\mu$ l/Test, blue line). Non-fluorescently stained cells were used as blank control (red line).



Flow cytometry:  $1 \times 10^6$  C2C12 cells were surface-stained with ABflo® 647 Rabbit anti-Human/Mouse CD276/B7-H3 mAb (A22157, 5  $\mu$ l/Test, orange line) or ABflo® 647 Rabbit IgG isotype control (A22070, 5  $\mu$ l/Test, blue line). Non-fluorescently stained C2C12 cells were used as blank control (red line).



Flow cytometry:  $1 \times 10^6$  C2C12 cells were surface-stained with ABflo® 647 Rabbit IgG isotype control (A22070, 5  $\mu$ l/Test, left) or ABflo® 647 Rabbit anti-Human/Mouse CD276/B7-H3 mAb (A22157, 5  $\mu$ l/Test, right).