

A22047

Leader in Biomolecular Solutions for Life Science



Cathepsin G Rabbit mAb

Catalog No.: A22047 **Recombinant**

Basic Information

Observed MW

Refer to figures

Calculated MW

29kDa

Category

SMab Recombinant Monoclonal Antibody

Applications

IF/ICC,ELISA

Cross-Reactivity

Human

CloneNo number

ARC54789

Background

The protein encoded by this gene, a member of the peptidase S1 protein family, is found in azurophil granules of neutrophilic polymorphonuclear leukocytes. The encoded protease has a specificity similar to that of chymotrypsin C, and may participate in the killing and digestion of engulfed pathogens, and in connective tissue remodeling at sites of inflammation. In addition, the encoded protein is antimicrobial, with bacteriocidal activity against *S. aureus* and *N. gonorrhoeae*. Transcript variants utilizing alternative polyadenylation signals exist for this gene.

Recommended Dilutions

IF/ICC 1:50 - 1:200

Immunogen Information

Gene ID

1511

Swiss Prot

P08311

Immunogen

A synthetic peptide corresponding to a sequence within amino acids 156-255 of human Cathepsin G (NP_001902.1).

Synonyms

CG; CATG; Cathepsin G

Contact



www.abclonal.com

Product Information

Source

Rabbit

Isotype

IgG

Purification

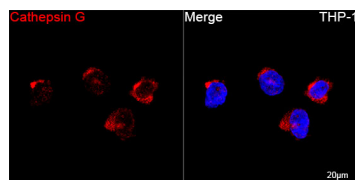
Affinity purification

Storage

Store at -20°C. Avoid freeze / thaw cycles.

Buffer: PBS with 0.05% proclin300,0.05% BSA,50% glycerol,pH7.3.

Validation Data



Confocal imaging of THP-1 cells
using Cathepsin G Rabbit mAb
(A22047,dilution 1:200) followed by a
further incubation with Cy3 Goat Anti-Rabbit
IgG (H+L) (AS007,dilution 1:500)(Red).DAPI
was used for nuclear staining (Blue).
Objective: 100x.