

A21982

Leader in Biomolecular Solutions for Life Science



# Mesothelin Rabbit mAb

Catalog No.: A21982

Recombinant

## Basic Information

### Observed MW

40kDa/69kDa

### Calculated MW

69kDa

### Category

SMab Recombinant Monoclonal Antibody

### Applications

WB, IHC-P, ELISA

### Cross-Reactivity

Human

### CloneNo number

ARC54390

## Background

This gene encodes a preproprotein that is proteolytically processed to generate two protein products, megakaryocyte potentiating factor and mesothelin. Megakaryocyte potentiating factor functions as a cytokine that can stimulate colony formation of bone marrow megakaryocytes. Mesothelin is a glycosylphosphatidylinositol-anchored cell-surface protein that may function as a cell adhesion protein. This protein is overexpressed in epithelial mesotheliomas, ovarian cancers and in specific squamous cell carcinomas. Alternative splicing results in multiple transcript variants, at least one of which encodes an isoform that is proteolytically processed.

## Recommended Dilutions

WB	1:1000 - 1:5000
IHC-P	1:50 - 1:200

## Immunogen Information

### Gene ID

10232

### Swiss Prot

Q13421

### Immunogen

Recombinant fusion protein containing a sequence corresponding to amino acids 296-606 of human Mesothelin (NP\_037536.2).

### Synonyms

MPF; SMRP; Mesothelin

## Contact



[www.abclonal.com](http://www.abclonal.com)

## Product Information

### Source

Rabbit

### Isotype

IgG

### Purification

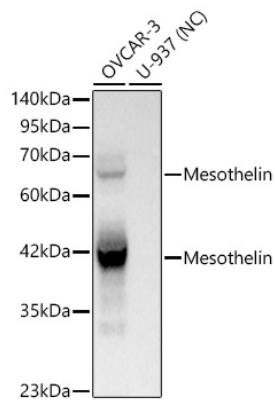
Affinity purification

### Storage

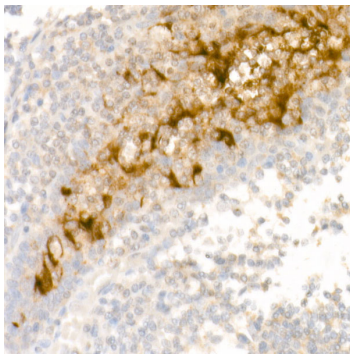
Store at -20°C. Avoid freeze / thaw cycles.

Buffer: PBS with 0.05% proclin300, 0.05% BSA, 50% glycerol, pH7.3.

## Validation Data



Western blot analysis of lysates from OVCAR3 cell, using Mesothelin Rabbit mAb (A21982) at 1:2000 dilution.  
Secondary antibody: HRP Goat Anti-Rabbit IgG (H+L) (AS014) at 1:10000 dilution.  
Lysates/proteins: 25µg per lane.  
Blocking buffer: 3% nonfat dry milk in TBST.  
Detection: ECL Basic Kit (RM00020).  
Exposure time: 0.1s.



Immunohistochemistry analysis of Mesothelin in paraffin-embedded human tonsil using Mesothelin Rabbit mAb (A21982) at dilution of 1:50 (40x lens). Perform high pressure antigen retrieval with 10 mM citrate buffer pH 6.0 before commencing with IHC staining protocol.