

A21919

Leader in Biomolecular Solutions for Life Science



CD44 Rabbit mAb

Catalog No.: A21919

Recombinant

Basic Information

Observed MW

80kDa

Calculated MW

82kDa

Category

SMab Recombinant Monoclonal Antibody

Applications

WB, IHC-P, FC, ELISA

Cross-Reactivity

Human

CloneNo number

ARC0464

Background

The protein encoded by this gene is a cell-surface glycoprotein involved in cell-cell interactions, cell adhesion and migration. It is a receptor for hyaluronic acid (HA) and can also interact with other ligands, such as osteopontin, collagens, and matrix metalloproteinases (MMPs). This protein participates in a wide variety of cellular functions including lymphocyte activation, recirculation and homing, hematopoiesis, and tumor metastasis. Transcripts for this gene undergo complex alternative splicing that results in many functionally distinct isoforms, however, the full length nature of some of these variants has not been determined. Alternative splicing is the basis for the structural and functional diversity of this protein, and may be related to tumor metastasis.

Recommended Dilutions

WB	1:500 - 1:1000
IHC-P	1:500 - 1:1000
FC	1:20 - 1:50

Immunogen Information

Gene ID

960

Swiss Prot

P16070

Immunogen

A synthetic peptide corresponding to a sequence within amino acids 100-200 of human CD44 (P16070).

Synonyms

IN; LHR; MC56; MDU2; MDU3; MIC4; Pgp1; CDW44; CSPG8; H-CAM; HCELL; ECM-III; HUTCH-1; HUTCH-I; ECMR-III; Hermes-1; CD44

Contact



www.abclonal.com

Product Information

Source

Rabbit

Isotype

IgG

Purification

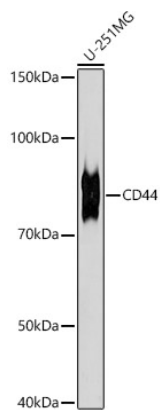
Affinity purification

Storage

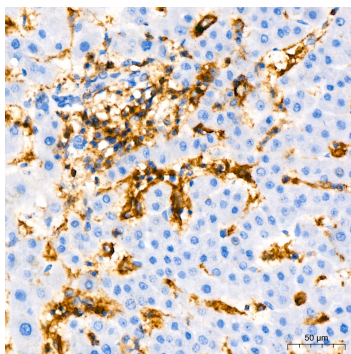
Store at -20°C. Avoid freeze / thaw cycles.

Buffer: PBS with 0.02% sodium azide, 0.05% BSA, 50% glycerol, pH 7.3.

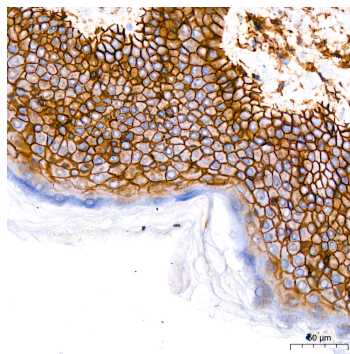
Validation Data



Western blot analysis of extracts of U-251MG cells, using CD44 antibody (A21919) at 1:1000 dilution.
Secondary antibody: HRP Goat Anti-Rabbit IgG (H+L) (AS014) at 1:10000 dilution.
Lysates/proteins: 25µg per lane.
Blocking buffer: 3% nonfat dry milk in TBST.
Detection: ECL Basic Kit (RM00020).
Exposure time: 180s.



Immunohistochemistry analysis of paraffin-embedded human liver using CD44 Rabbit mAb (A21919) at dilution of 1:800 (40x lens). Perform high pressure antigen retrieval with 10 mM Tris/EDTA buffer pH 9.0 before commencing with IHC staining protocol.



Immunohistochemistry analysis of paraffin-embedded human skin using CD44 Rabbit mAb (A21919) at dilution of 1:800 (40x lens). Perform high pressure antigen retrieval with 10 mM Tris/EDTA buffer pH 9.0 before commencing with IHC staining protocol.