

A21757

Leader in Biomolecular Solutions for Life Science



## CYP11A1 Rabbit pAb

Catalog No.: A21757

### Basic Information

#### Observed MW

Refer to figures

#### Calculated MW

60kDa

#### Category

Polyclonal Antibody

#### Applications

WB, ELISA

#### Cross-Reactivity

Human

### Background

This gene encodes a member of the cytochrome P450 superfamily of enzymes. The cytochrome P450 proteins are monooxygenases which catalyze many reactions involved in drug metabolism and synthesis of cholesterol, steroids and other lipids. This protein localizes to the mitochondrial inner membrane and catalyzes the conversion of cholesterol to pregnenolone, the first and rate-limiting step in the synthesis of the steroid hormones. Two transcript variants encoding different isoforms have been found for this gene. The cellular location of the smaller isoform is unclear since it lacks the mitochondrial-targeting transit peptide.

### Recommended Dilutions

WB 1:500 - 1:1000

### Immunogen Information

#### Gene ID

1583

#### Swiss Prot

P05108

#### Immunogen

Recombinant fusion protein containing a sequence corresponding to amino acids 40-320 of human CYP11A1 (NP\_000772.2).

#### Synonyms

CYP11A; CYPXIA1; P450SCC; CYP11A1

### Contact



[www.abclonal.com](http://www.abclonal.com)

### Product Information

#### Source

Rabbit

#### Isotype

IgG

#### Purification

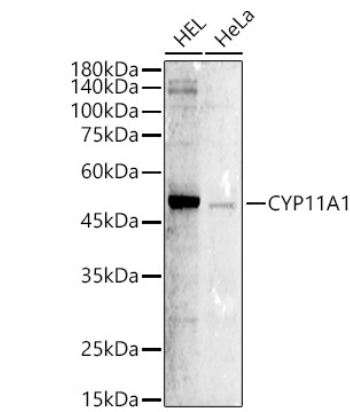
Affinity purification

#### Storage

Store at -20°C. Avoid freeze / thaw cycles.

Buffer: PBS with 0.05% proclin300, 50% glycerol, pH7.3.

Validation Data



Western blot analysis of extracts of various cell lines, using CYP11A1 antibody (A21757) at 1:800 dilution.  
Secondary antibody: HRP Goat Anti-Rabbit IgG (H+L) (A5014) at 1:10000 dilution.  
Lysates/proteins: 25µg per lane.  
Blocking buffer: 3% nonfat dry milk in TBST.  
Detection: ECL Basic Kit (RM00020).  
Exposure time: 90s.