

A21651

Leader in Biomolecular Solutions for Life Science



14-3-3 gamma Rabbit pAb

Catalog No.: A21651

Basic Information

Observed MW

Refer to figures

Calculated MW

28kDa

Category

Mouse Monoclonal Antibody

Applications

WB, ELISA

Cross-Reactivity

Human, Mouse

Background

This gene product belongs to the 14-3-3 family of proteins which mediate signal transduction by binding to phosphoserine-containing proteins. This highly conserved protein family is found in both plants and mammals, and this protein is 100% identical to the rat ortholog. It is induced by growth factors in human vascular smooth muscle cells, and is also highly expressed in skeletal and heart muscles, suggesting an important role for this protein in muscle tissue. It has been shown to interact with RAF1 and protein kinase C, proteins involved in various signal transduction pathways.

Recommended Dilutions

WB 1:500 - 1:2000

Immunogen Information

Gene ID

7532

Swiss Prot

P61981

Immunogen

A synthetic peptide corresponding to a sequence within amino acids 100-200 of human 14-3-3 gamma (P61981).

Synonyms

DEE56; EIEE56; PPP1R170; 14-3-3GAMMA; 14-3-3 gamma

Contact



www.abclonal.com

Product Information

Source

Rabbit

Isotype

IgG

Purification

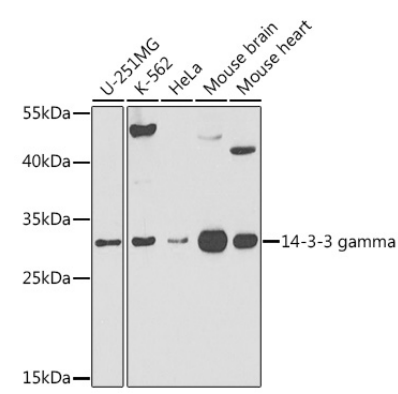
Affinity purification

Storage

Store at -20°C. Avoid freeze / thaw cycles.

Buffer: PBS with 0.01% thimerosal, 50% glycerol, pH 7.3.

Validation Data



Western blot analysis of various lysates using 14-3-3 gamma Rabbit pAb (A21651) at 1:500 dilution. Secondary antibody: HRP Goat Anti-Rabbit IgG (H+L) (AS014) at 1:10000 dilution. Lysates/proteins: 25µg per lane. Blocking buffer: 3% nonfat dry milk in TBST. Detection: ECL Basic Kit (RM00020). Exposure time: 90s.