

A21468

Leader in Biomolecular Solutions for Life Science



IRF3 Rabbit pAb

Catalog No.: A21468

Basic Information

Observed MW

49kDa

Calculated MW

47kDa

Category

Polyclonal Antibody

Applications

WB, IHC-P, IP, ELISA

Cross-Reactivity

Human, Mouse, Rat

Background

This gene encodes a member of the interferon regulatory transcription factor (IRF) family. The encoded protein is found in an inactive cytoplasmic form that upon serine/threonine phosphorylation forms a complex with CREBBP. This complex translocates to the nucleus and activates the transcription of interferons alpha and beta, as well as other interferon-induced genes. The protein plays an important role in the innate immune response against DNA and RNA viruses. Mutations in this gene are associated with Encephalopathy, acute, infection-induced, herpes-specific, 7.

Recommended Dilutions

WB 1:500 - 1:1000

IHC-P 1:50 - 1:200

IP 0.5µg-4µg antibody for
200µg-400µg extracts of
whole cells

Immunogen Information

Gene ID

3661

Swiss Prot

Q14653

Immunogen

Recombinant protein of human IRF3.

Synonyms

IIAE7; IRF3

Contact



www.abclonal.com

Product Information

Source

Rabbit

Isotype

IgG

Purification

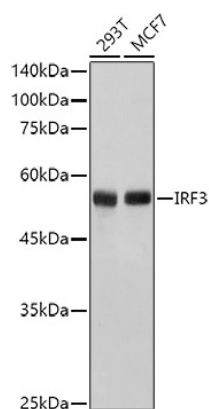
Affinity purification

Storage

Store at -20°C. Avoid freeze / thaw cycles.

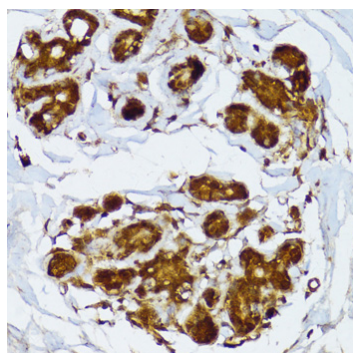
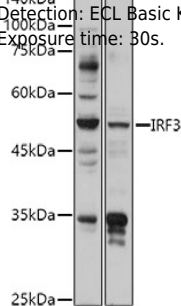
Buffer: PBS with 0.02% sodium azide, 50% glycerol, pH7.3.

Validation Data

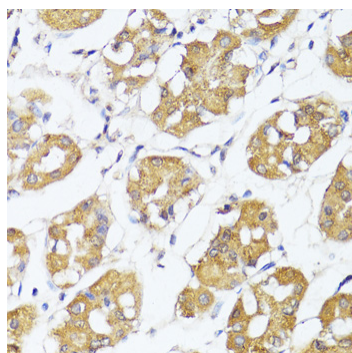


Western blot analysis of various lysates using IRF3 Rabbit pAb (A21468) at 1:1000 dilution.
 Secondary antibody: HRP Goat Anti-Rabbit IgG (H+L) (A5014) at 1:10000 dilution.
 Lysates/proteins: 25µg per lane.
 Blocking buffer: 3% nonfat dry milk in TBST.
 Detection: ECL Basic Kit (RM00020).
 Exposure time: 3s.

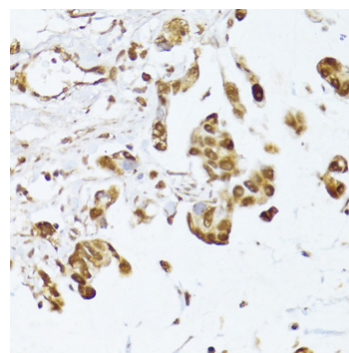
Western blot analysis of various lysates using IRF3 Rabbit pAb (A21468) at 1:1000 dilution.
 Secondary antibody: HRP Goat Anti-Rabbit IgG (H+L) (A5014) at 1:10000 dilution.
 Lysates/proteins: 25µg per lane.
 Blocking buffer: 3% nonfat dry milk in TBST.
 Detection: ECL Basic Kit (RM00020).
 Exposure time: 30s.



Immunohistochemistry analysis of IRF3 in paraffin-embedded human breast using IRF3 Rabbit pAb (A21468) at dilution of 1:100 (40x lens). Perform microwave antigen retrieval with 10 mM PBS buffer pH 7.2 before commencing with IHC staining protocol.

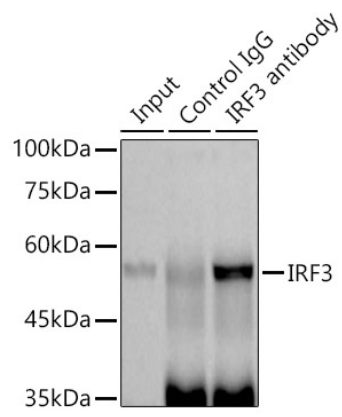


Immunohistochemistry analysis of IRF3 in paraffin-embedded human stomach using IRF3 Rabbit pAb (A21468) at dilution of 1:100 (40x lens). Perform microwave antigen retrieval with 10 mM PBS buffer pH 7.2 before commencing with IHC staining protocol.



Immunohistochemistry analysis of IRF3 in paraffin-embedded human gastric cancer using IRF3 Rabbit pAb (A21468) at dilution of 1:100 (40x lens). Perform microwave antigen retrieval with 10 mM PBS buffer pH 7.2 before commencing with IHC staining protocol.

Validation Data



Immunoprecipitation analysis of 300 µg extracts of MCF7 cells using 3 µg IRF3 antibody (A21468). Western blot was performed from the immunoprecipitate using IRF3 antibody (A21468) at a dilution of 1:1000.