

A21262

Leader in Biomolecular Solutions for Life Science



## GATA1 Rabbit mAb

Catalog No.: A21262

Recombinant

### Basic Information

#### Observed MW

47kDa

#### Calculated MW

43kDa

#### Category

SMab Recombinant Monoclonal Antibody

#### Applications

WB,IP,ELISA

#### Cross-Reactivity

Human

#### CloneNo number

ARC53588

### Background

This gene encodes a protein which belongs to the GATA family of transcription factors. The protein plays an important role in erythroid development by regulating the switch of fetal hemoglobin to adult hemoglobin. Mutations in this gene have been associated with X-linked dyserythropoietic anemia and thrombocytopenia.

### Recommended Dilutions

WB 1:500 - 1:1000

IP 0.5µg-4µg antibody for  
200µg-600µg extracts of  
whole cells

### Immunogen Information

#### Gene ID

2623

#### Swiss Prot

P15976

#### Immunogen

A synthetic peptide corresponding to a sequence within amino acids 1-100 of human GATA1 (NP\_002040.1).

#### Synonyms

GF1; GF-1; NFE1; XLTT; ERYF1; NF-E1; XLANP; XLTDA; GATA-1; HAEADA; GATA1

### Contact



[www.abclonal.com](http://www.abclonal.com)

### Product Information

#### Source

Rabbit

#### Isotype

IgG

#### Purification

Affinity purification

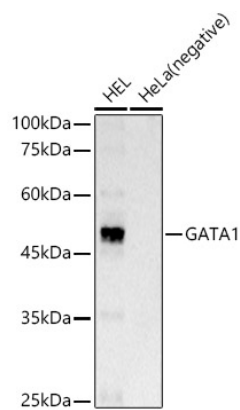
#### Storage

Store at -20°C. Avoid freeze / thaw cycles.

Buffer: PBS with 0.05% proclin300,0.05% BSA,50% glycerol,pH7.3.

## Validation Data

---



Western blot analysis of various lysates, using GATA1 Rabbit mAb (A21262) at 1:1000 dilution.  
Secondary antibody: HRP Goat Anti-Rabbit IgG (H+L) (AS014) at 1:10000 dilution.  
Lysates/proteins: 25µg per lane.  
Blocking buffer: 3% nonfat dry milk in TBST.  
Detection: ECL Basic Kit (RM00020).  
Exposure time: 3s.