

A20759

Leader in Biomolecular Solutions for Life Science



## SEH1L Rabbit pAb

Catalog No.: A20759

### Basic Information

**Observed MW**

45kDa

**Calculated MW**

40kDa

**Category**

Polyclonal Antibody

**Applications**

WB, ELISA

**Cross-Reactivity**

Human, Mouse, Rat

### Background

The protein encoded by this gene is part of a nuclear pore complex, Nup107-160. This protein contains WD repeats and shares 34% amino acid identity with yeast Seh1 and 30% identity with yeast Sec13. All constituents of the Nup107-160 complex, including this protein, specifically localize to kinetochores in mitosis. Two alternatively spliced transcript variants encoding distinct isoforms have been found for this gene.

### Recommended Dilutions

WB 1:500 - 1:1000

### Immunogen Information

**Gene ID**

81929

**Swiss Prot**

Q96EE3

**Immunogen**

Recombinant fusion protein containing a sequence corresponding to amino acids 260-360 of human SEH1L (NP\_112493.2).

**Synonyms**

Seh1; SEH1A; SEH1B; SEC13L; SEH1L

### Contact



[www.abclonal.com](http://www.abclonal.com)

### Product Information

**Source**

Rabbit

**Isotype**

IgG

**Purification**

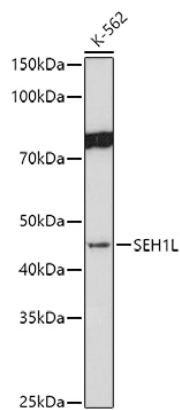
Affinity purification

**Storage**

Store at -20°C. Avoid freeze / thaw cycles.

Buffer: PBS with 0.01% thimerosal, 50% glycerol, pH7.3.

## Validation Data



Western blot analysis of lysates from K-562 cells, using SEH1L Rabbit pAb (A20759) at 1:1000 dilution.  
Secondary antibody: HRP Goat Anti-Rabbit IgG (H+L) (A5014) at 1:10000 dilution.  
Lysates/proteins: 25µg per lane.  
Blocking buffer: 3% nonfat dry milk in TBST.  
Detection: ECL Basic Kit (RM00020).  
Exposure time: 180s.

Western blot analysis of various lysates using SEH1L Rabbit pAb (A20759) at 1:1000 dilution.  
Secondary antibody: HRP Goat Anti-Rabbit IgG (H+L) (A5014) at 1:10000 dilution.  
Lysates/proteins: 25µg per lane.  
Blocking buffer: 3% nonfat dry milk in TBST.  
Detection: ECL Basic Kit (RM00020).  
Exposure time: 180s.

