

A20708

Leader in Biomolecular Solutions for Life Science



# HUWE1 Rabbit pAb

Catalog No.: A20708

## Basic Information

### Observed MW

480kDa

### Calculated MW

482kDa

### Category

Polyclonal Antibody

### Applications

WB, ELISA

### Cross-Reactivity

Human, Rat

## Background

This gene encodes a protein containing a C-terminal HECT (E6AP type E3 ubiquitin protein ligase) domain that functions as an E3 ubiquitin ligase. The encoded protein is required for the ubiquitination and subsequent degradation of the anti-apoptotic protein Mcl1 (myeloid cell leukemia sequence 1 (BCL2-related)). This protein also ubiquitinates the p53 tumor suppressor, core histones, and DNA polymerase beta. Mutations in this gene are associated with Turner type X-linked syndromic cognitive disability.

## Recommended Dilutions

WB 1:500 - 1:1000

## Immunogen Information

### Gene ID

10075

### Swiss Prot

Q7Z6Z7

### Immunogen

A synthetic peptide corresponding to a sequence within amino acids 1-100 of human HUWE1 (NP\_113584.3).

### Synonyms

MULE; Ib772; LASU1; MRXST; UREB1; HECTH9; URE-B1; ARF-BP1; HSPC272; HUWE1

## Contact



[www.abclonal.com](http://www.abclonal.com)

## Product Information

### Source

Rabbit

### Isotype

IgG

### Purification

Affinity purification

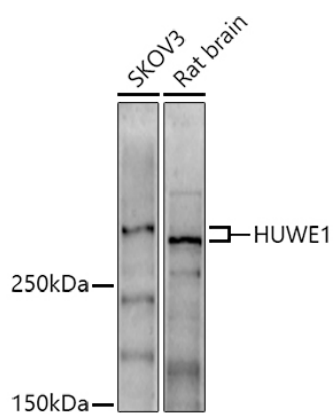
### Storage

Store at -20°C. Avoid freeze / thaw cycles.

Buffer: PBS with 0.05% proclin300, 50% glycerol, pH7.3.

## Validation Data

---



Western blot analysis of various lysates using HUWE1 Rabbit pAb (A20708) at 1:1000 dilution.  
Secondary antibody: HRP Goat Anti-Rabbit IgG (H+L) (A5014) at 1:10000 dilution.  
Lysates/proteins: 25µg per lane.  
Blocking buffer: 3% nonfat dry milk in TBST.  
Detection: ECL Basic Kit (RM00020).  
Exposure time: 180s.