

A2067

Leader in Biomolecular Solutions for Life Science



E2F1 Rabbit pAb

Catalog No.: A2067

8 Publications

Basic Information

Observed MW

60kDa

Calculated MW

47kDa

Category

Polyclonal Antibody

Applications

WB, IF/ICC, ELISA

Cross-Reactivity

Human, Mouse, Rat

Background

The protein encoded by this gene is a member of the E2F family of transcription factors. The E2F family plays a crucial role in the control of cell cycle and action of tumor suppressor proteins and is also a target of the transforming proteins of small DNA tumor viruses. The E2F proteins contain several evolutionally conserved domains found in most members of the family. These domains include a DNA binding domain, a dimerization domain which determines interaction with the differentiation regulated transcription factor proteins (DP), a transactivation domain enriched in acidic amino acids, and a tumor suppressor protein association domain which is embedded within the transactivation domain. This protein and another 2 members, E2F2 and E2F3, have an additional cyclin binding domain. This protein binds preferentially to retinoblastoma protein pRB in a cell-cycle dependent manner. It can mediate both cell proliferation and p53-dependent/independent apoptosis.

Recommended Dilutions

WB	1:500 - 1:1000
IF/ICC	1:20 - 1:100

Immunogen Information

Gene ID

1869

Swiss Prot

Q01094

Immunogen

Recombinant fusion protein containing a sequence corresponding to amino acids 200-301 of human E2F1 (NP_005216.1).

Synonyms

RBP3; E2F-1; RBAP1; RBBP3; E2F1

Contact



www.abclonal.com

Product Information

Source

Rabbit

Isotype

IgG

Purification

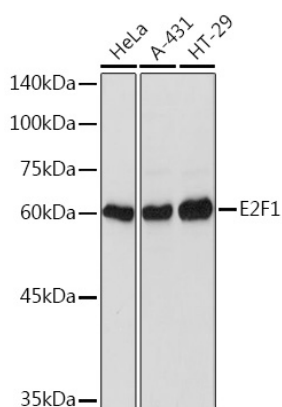
Affinity purification

Storage

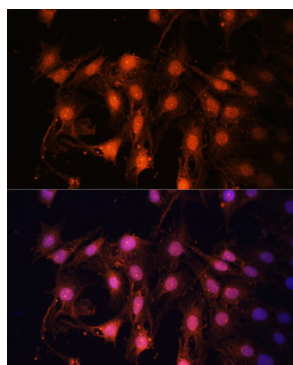
Store at -20°C. Avoid freeze / thaw cycles.

Buffer: PBS with 0.05% proclin300, 50% glycerol, pH7.3.

Validation Data



Western blot analysis of extracts of various cell lines, using E2F1 Rabbit pAb (A2067) at 1:1000 dilution.
Secondary antibody: HRP Goat Anti-Rabbit IgG (H+L) (AS014) at 1:10000 dilution.
Lysates/proteins: 25µg per lane.
Blocking buffer: 3% nonfat dry milk in TBST.
Detection: ECL Basic Kit (RM00020).
Exposure time: 3s.



Immunofluorescence analysis of C6 cells using E2F1 Polyclonal Antibody (A2067) at dilution of 1:100 (40x lens). Blue: DAPI for nuclear staining.