

RPL39 Rabbit pAb

Catalog No.: A20603

Basic Information

Observed MW

Refer to figures

Calculated MW

6kDa

Category

Primary antibody

Applications

ELISA, WB, IF/ICC

Cross-Reactivity

Human

Background

Ribosomes, the organelles that catalyze protein synthesis, consist of a small 40S subunit and a large 60S subunit. Together these subunits are composed of 4 RNA species and approximately 80 structurally distinct proteins. This gene encodes a ribosomal protein that is a component of the 60S subunit. The protein belongs to the S39E family of ribosomal proteins. It is located in the cytoplasm. In rat, the protein is the smallest, and one of the most basic, proteins of the ribosome. This gene is co-transcribed with the U69 small nucleolar RNA gene, which is located in its second intron. As is typical for genes encoding ribosomal proteins, there are multiple processed pseudogenes of this gene dispersed through the genome.

Recommended Dilutions

WB	1:500 - 1:2000
IF/ICC	1:50 - 1:200

Immunogen Information

Gene ID	Swiss Prot
6170	P62891

Immunogen

A synthetic peptide corresponding to a sequence within amino acids 1-51 of human RPL39 (NP_000991.1).

Synonyms

L39; eL39; RPL39P42; RPL39_23_1806; RPL39

Contact

 | www.abclonal.com

Product Information

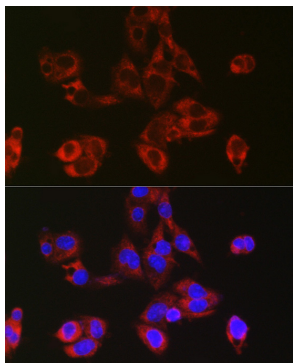
Source	Isotype	Purification
Rabbit	IgG	Affinity purification

Storage

Store at -20°C. Avoid freeze / thaw cycles.

Buffer: PBS with 0.05% proclin300, 50% glycerol, pH7.3.

Validation Data



Immunofluorescence analysis of HepG2 cells using RPL39 Rabbit pAb (A20603) at dilution of 1:50 (40x lens). Blue: DAPI for nuclear staining.