

A20461

Leader in Biomolecular Solutions for Life Science



## SPI1 Rabbit pAb

Catalog No.: A20461

2 Publications

### Basic Information

#### Observed MW

42kDa

#### Calculated MW

31kDa

#### Category

Polyclonal Antibody

#### Applications

WB, IHC-P, ELISA

#### Cross-Reactivity

Human, Mouse

### Background

This gene encodes an ETS-domain transcription factor that activates gene expression during myeloid and B-lymphoid cell development. The nuclear protein binds to a purine-rich sequence known as the PU-box found near the promoters of target genes, and regulates their expression in coordination with other transcription factors and cofactors. The protein can also regulate alternative splicing of target genes. Multiple transcript variants encoding different isoforms have been found for this gene.

### Recommended Dilutions

WB	1:500 - 1:1000
IHC-P	1:50 - 1:200

### Immunogen Information

#### Gene ID

6688

#### Swiss Prot

P17947

#### Immunogen

Recombinant fusion protein containing a sequence corresponding to amino acids 17-98 of human SPI1 (NP\_003111.2).

#### Synonyms

OF; PU.1; AGM10; SFPI1; SPI-1; SPI-A; SPI1

### Contact



[www.abclonal.com](http://www.abclonal.com)

### Product Information

#### Source

Rabbit

#### Isotype

IgG

#### Purification

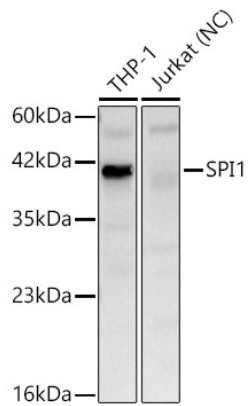
Affinity purification

#### Storage

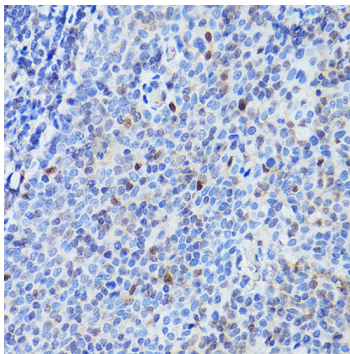
Store at -20°C. Avoid freeze / thaw cycles.

Buffer: PBS with 0.05% proclin300, 50% glycerol, pH7.3.

## Validation Data



Western blot analysis of various lysates, using SPI1 Rabbit pAb (A20461) at 1:700 dilution.  
Secondary antibody: HRP Goat Anti-Rabbit IgG (H+L) (A5014) at 1:10000 dilution.  
Lysates/proteins: 25ug per lane.  
Blocking buffer: 3% nonfat dry milk in TBST.  
Detection: ECL Basic Kit (RM00020).  
Negative control (NC): Jurkat  
Exposure time: 30s.



Immunohistochemistry analysis of paraffin-embedded human tonsil using SPI1 Rabbit pAb (A20461) at dilution of 1:100 (40x lens). Perform high pressure antigen retrieval with 10 mM citrate buffer pH 6.0 before commencing with IHC staining protocol.