

A20418

Leader in Biomolecular Solutions for Life Science



## PLIN5 Rabbit pAb

Catalog No.: A20418

1 Publications

### Basic Information

#### Observed MW

51kDa

#### Calculated MW

51kDa

#### Category

Polyclonal Antibody

#### Applications

WB,IF/ICC,ELISA

#### Cross-Reactivity

Human,Mouse,Rat

### Background

Predicted to enable identical protein binding activity and lipase binding activity. Predicted to be involved in several processes, including negative regulation of peroxisome proliferator activated receptor signaling pathway; regulation of lipase activity; and regulation of lipid metabolic process. Located in intracellular membrane-bounded organelle and lipid droplet.

### Recommended Dilutions

WB	1:500 - 1:1000
IF/ICC	1:50 - 1:200

### Immunogen Information

#### Gene ID

440503

#### Swiss Prot

Q00G26

#### Immunogen

Recombinant fusion protein containing a sequence corresponding to amino acids 270-463 of human PLIN5 (NP\_001013728.2).

#### Synonyms

MLDP; LSDA5; LSDP5; OXPAT; PLIN5

### Contact



[www.abclonal.com](http://www.abclonal.com)

### Product Information

#### Source

Rabbit

#### Isotype

IgG

#### Purification

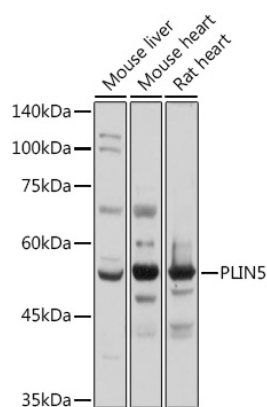
Affinity purification

#### Storage

Store at -20°C. Avoid freeze / thaw cycles.

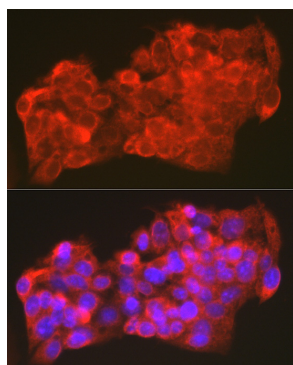
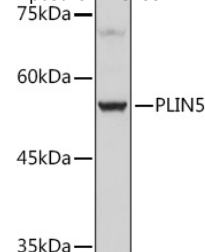
Buffer: PBS with 0.05% proclin300,50% glycerol,pH7.3.

## Validation Data



Western blot analysis of various lysates using PLIN5 Rabbit pAb (A20418) at 1:1000 dilution.  
 Secondary antibody: HRP Goat Anti-Rabbit IgG (H+L) (A5014) at 1:10000 dilution.  
 Lysates/proteins: 25µg per lane.  
 Blocking buffer: 3% nonfat dry milk in TBST.  
 Detection: ECL Basic Kit (RM00020).  
 Exposure time: 1s.

Western blot analysis of lysates from HepG2 cells, using PLIN5 Rabbit pAb (A20418) at 1:1000 dilution.  
 Secondary antibody: HRP Goat Anti-Rabbit IgG (H+L) (A5014) at 1:10000 dilution.  
 Lysates/proteins: 25µg per lane.  
 Blocking buffer: 3% nonfat dry milk in TBST.  
 Detection: ECL Basic Kit (RM00020).  
 Exposure time: 3s.



Immunofluorescence analysis of HepG2 cells using PLIN5 Rabbit pAb (A20418) at dilution of 1:100 (40x lens). Secondary antibody: Cy3 Goat Anti-Rabbit IgG (H+L) (A5007) at 1:500 dilution. Blue: DAPI for nuclear staining.