

A20368

Leader in Biomolecular Solutions for Life Science



OsTE Rabbit pAb

Catalog No.: A20368

Basic Information

Observed MW

75kDa

Calculated MW

56kDa

Category

Polyclonal Antibody

Applications

WB, ELISA

Cross-Reactivity

Oryza sativa

Background

Component of the anaphase promoting complex/cyclosome (APC/C), a cell cycle-regulated E3 ubiquitin-protein ligase complex that controls progression through mitosis and the G1 phase of the cell cycle.

Recommended Dilutions

WB 1:500 - 1:2000

Immunogen Information

Gene ID

4331448

Swiss Prot

Q10SH0

Immunogen

A synthetic peptide of Oryza sativa OsTE.

Synonyms

TAD1; TE; OsCCS52A; OsTE

Contact



www.abclonal.com

Product Information

Source

Rabbit

Isotype

IgG

Purification

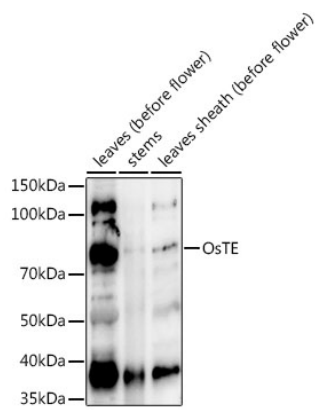
Affinity purification

Storage

Store at -20°C. Avoid freeze / thaw cycles.

Buffer: PBS with 0.01% thimerosal, 50% glycerol, pH 7.3.

Validation Data



Western blot analysis of extracts of various tissues from the japonica rice (*Oryza sativa* L.) variety Zhonghua 11, using OsTE Rabbit pAb (A20368) at 1:1000 dilution.
Secondary antibody: HRP Goat Anti-Rabbit IgG (H+L) (AS014) at 1:10000 dilution.
Lysates/proteins: 25µg per lane.
Blocking buffer: 3% nonfat dry milk in TBST.
Detection: ECL Enhanced Kit (RM00021).
Exposure time: 30s.