

A20258

Leader in Biomolecular Solutions for Life Science



XCR1 Rabbit pAb

Catalog No.: A20258

Basic Information

Observed MW

Refer to figures

Calculated MW

39kDa

Category

Mouse Monoclonal Antibody

Applications

IHC-P,ELISA

Cross-Reactivity

Rat

Background

The protein encoded by this gene is a chemokine receptor belonging to the G protein-coupled receptor superfamily. The family members are characterized by the presence of 7 transmembrane domains. The encoded protein transduces a signal by increasing the intracellular calcium ion level. The viral macrophage inflammatory protein-II is an antagonist of this receptor and blocks signaling. Some studies have implicated a cluster of genes at 3p21.31, including this gene, as associated with COVID-19 risk. The encoded protein may also play a role in cell proliferation and migration in several types of cancer.

Recommended Dilutions

IHC-P 1:50 - 1:200

Immunogen Information

Gene ID

2829

Swiss Prot

P46094

Immunogen

A synthetic peptide corresponding to a sequence within amino acids 1-100 of human XCR1 (NP_001019815.1).

Synonyms

GPR5; CCXCR1; XCR1

Contact



www.abclonal.com

Product Information

Source

Rabbit

Isotype

IgG

Purification

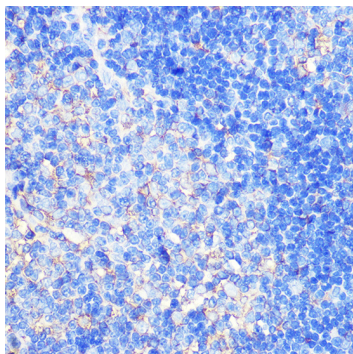
Affinity purification

Storage

Store at -20°C. Avoid freeze / thaw cycles.

Buffer: PBS with 0.01% thimerosal, 50% glycerol, pH7.3.

Validation Data



Immunohistochemistry analysis of XCR1 in paraffin-embedded rat thymus using XCR1 Rabbit pAb (A20258) at dilution of 1:100 (40x lens). Perform microwave antigen retrieval with 10 mM Tris/EDTA buffer pH 9.0 before commencing with IHC staining protocol.