

A19267

Leader in Biomolecular Solutions for Life Science



## JAG2 Rabbit mAb

Catalog No.: A19267

Recombinant

### Basic Information

#### Observed MW

150kDa

#### Calculated MW

133kDa

#### Category

SMab Recombinant Monoclonal Antibody

#### Applications

WB, ELISA

#### Cross-Reactivity

Human

#### CloneNo number

ARC2438

### Background

The Notch signaling pathway is an intercellular signaling mechanism that is essential for proper embryonic development. Members of the Notch gene family encode transmembrane receptors that are critical for various cell fate decisions. The protein encoded by this gene is one of several ligands that activate Notch and related receptors. Two transcript variants encoding different isoforms have been found for this gene.

### Recommended Dilutions

WB 1:500 - 1:1000

### Immunogen Information

#### Gene ID

3714

#### Swiss Prot

Q9Y219

#### Immunogen

A synthetic peptide corresponding to a sequence within amino acids 1-100 of human JAG2 (Q9Y219).

#### Synonyms

HJ2; SER2; LGMDR27; JAG2

### Contact



[www.abclonal.com](http://www.abclonal.com)

### Product Information

#### Source

Rabbit

#### Isotype

IgG

#### Purification

Affinity purification

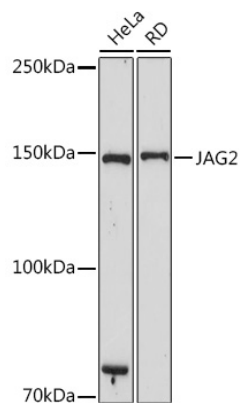
#### Storage

Store at -20°C. Avoid freeze / thaw cycles.

Buffer: PBS with 0.02% sodium azide, 0.05% BSA, 50% glycerol, pH7.3.

## Validation Data

---



Western blot analysis of extracts of various cell lines, using JAG2 Rabbit mAb (A19267) at 1:1000 dilution.  
Secondary antibody: HRP Goat Anti-Rabbit IgG (H+L) (AS014) at 1:10000 dilution.  
Lysates/proteins: 25µg per lane.  
Blocking buffer: 3% nonfat dry milk in TBST.  
Detection: ECL Basic Kit (RM00020).  
Exposure time: 180s.