

A19258

Leader in Biomolecular Solutions for Life Science



## Placental lactogen (CSH1) Rabbit mAb

Catalog No.: A19258

Recombinant

### Basic Information

#### Observed MW

Refer to figures

#### Calculated MW

25kDa

#### Category

SMab Recombinant Monoclonal Antibody

#### Applications

IHC-P,IF/ICC,ELISA

#### Cross-Reactivity

Human

#### CloneNo number

ARC2426

### Background

The protein encoded by this gene is a member of the somatotropin/prolactin family of hormones and plays an important role in growth control. The gene is located at the growth hormone locus on chromosome 17 along with four other related genes in the same transcriptional orientation; an arrangement which is thought to have evolved by a series of gene duplications. Although the five genes share a remarkably high degree of sequence identity, they are expressed selectively in different tissues. Alternative splicing generates additional isoforms of each of the five growth hormones, leading to further diversity and potential for specialization. This particular family member is expressed mainly in the placenta and utilizes multiple transcription initiation sites. Expression of the identical mature proteins for chorionic somatomammotropin hormones 1 and 2 is upregulated during development, although the ratio of 1 to 2 increases by term. Mutations in this gene result in placental lactogen deficiency and Silver-Russell syndrome.

### Recommended Dilutions

IHC-P	1:50 - 1:200
IF/ICC	1:50 - 1:200

### Immunogen Information

#### Gene ID

1442

#### Swiss Prot

P01243

#### Immunogen

A synthetic peptide corresponding to a sequence within amino acids 1-100 of human Placental lactogen (CSH1) (P0DML2).

#### Synonyms

PL; CSA; CS-1; CSMT; GHB3; hCS-1; hCS-A; Placental lactogen (CSH1)

### Contact



[www.abclonal.com](http://www.abclonal.com)

### Product Information

#### Source

Rabbit

#### Isotype

IgG

#### Purification

Affinity purification

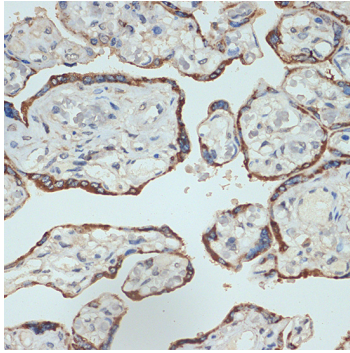
#### Storage

Store at -20°C. Avoid freeze / thaw cycles.

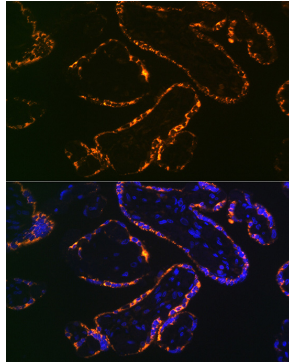
Buffer: PBS with 0.02% sodium azide,0.05% BSA,50% glycerol,pH7.3.

## Validation Data

---



Immunohistochemistry analysis of paraffin-embedded human placenta using Placental lactogen (CSH1) (CSH1) Rabbit mAb (A19258) at dilution of 1:100 (40x lens). Perform microwave antigen retrieval with 10 mM Tris/EDTA buffer pH 9.0 before commencing with IHC staining protocol.



Immunofluorescence analysis of human placenta using Placental lactogen (CSH1) (CSH1) Rabbit mAb (A19258) at dilution of 1:100 (40x lens). Blue: DAPI for nuclear staining.