

A19214

Leader in Biomolecular Solutions for Life Science



## RGA1 Rabbit pAb

Catalog No.: A19214

### Basic Information

#### Observed MW

44.2kDa

#### Calculated MW

44kDa

#### Category

Polyclonal Antibody

#### Applications

WB, ELISA

#### Cross-Reactivity

Oryza sativa

### Background

This gene Ubiquitous expression in leaves before flowering (RPKM 48.7), leaves after flowering (RPKM 36.4) and 6 other tissues. It encodes protein Alpha subunit of G proteins (guanine nucleotide binding). G-alpha has three isomers, guanine nucleotide-binding protein alpha-1 subunit isoform X1, guanine nucleotide-binding protein alpha-1 subunit isoform X2 and guanine nucleotide-binding protein alpha-1 subunit isoform X3. RGA1 is one of the regulators in salt response partially through ROS scavenging, which might be helpful in elucidating salt tolerant mechanisms of heterotrimeric G protein in rice (PMID 30621186). The  $\alpha$ -subunit of the rice heterotrimeric G protein, RGA1, regulates drought tolerance during the vegetative phase in the dwarf rice mutant d1 (PMID 27194741). The  $G\alpha$  heterotrimeric G protein subunit, RGA1, plays an important role in regulating photoprotection and photoprotection of rice (PMID 29216416).

### Recommended Dilutions

WB 1:500 - 1:2000

### Immunogen Information

#### Gene ID

4338448

#### Swiss Prot

Q0DJ33

#### Immunogen

Recombinant protein of Oryza sativa RGA1.

#### Synonyms

D1; GA1; GPA1; RGA1; GP-alpha-1; OJ1005\_D04.15

### Contact



[www.abclonal.com](http://www.abclonal.com)

### Product Information

#### Source

Rabbit

#### Isotype

IgG

#### Purification

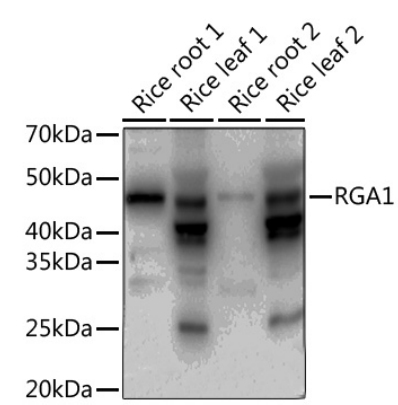
Affinity purification

#### Storage

Store at -20°C. Avoid freeze / thaw cycles.

Buffer: PBS with 0.02% sodium azide, 50% glycerol, pH 7.3.

Validation Data



Western blot analysis of various lysates using RGA1 Rabbit pAb (A19214) at 1:1000 dilution.  
Secondary antibody: HRP Goat Anti-Rabbit IgG (H+L) (AS014) at 1:8000 dilution.  
Lysates/proteins: 25µg per lane.  
Blocking buffer: 3% nonfat dry milk in TBST.  
Detection: ECL Basic Kit (RM00020).  
Exposure time: 30s.