

A19113

Leader in Biomolecular Solutions for Life Science



[KO Validated] Smad1 Rabbit mAb

Catalog No.: A19113 **KO** **Validated** **Recombinant**

Basic Information

Observed MW

60kDa

Calculated MW

52kDa

Category

SMab Recombinant Monoclonal Antibody

Applications

WB,IHC-P,IP,ELISA

Cross-Reactivity

Human,Mouse

CloneNo number

ARC52105

Background

The protein encoded by this gene belongs to the SMAD, a family of proteins similar to the gene products of the Drosophila gene 'mothers against decapentaplegic' (Mad) and the C. elegans gene Sma. SMAD proteins are signal transducers and transcriptional modulators that mediate multiple signaling pathways. This protein mediates the signals of the bone morphogenetic proteins (BMPs), which are involved in a range of biological activities including cell growth, apoptosis, morphogenesis, development and immune responses. In response to BMP ligands, this protein can be phosphorylated and activated by the BMP receptor kinase. The phosphorylated form of this protein forms a complex with SMAD4, which is important for its function in the transcription regulation. This protein is a target for SMAD-specific E3 ubiquitin ligases, such as SMURF1 and SMURF2, and undergoes ubiquitination and proteasome-mediated degradation. Alternatively spliced transcript variants encoding the same protein have been observed.

Recommended Dilutions

WB 1:500 - 1:1000

IHC-P 1:50 - 1:200

IP 0.5µg-4µg antibody for
200µg-400µg extracts of
whole cells

Immunogen Information

Gene ID

4086

Swiss Prot

Q15797

Immunogen

Recombinant fusion protein containing a sequence corresponding to amino acids 20-240 of human Smad1 (NP_005891.1).

Synonyms

BSP1; JV41; BSP-1; JV4-1; MADH1; MADR1; d1

Contact



www.abclonal.com

Product Information

Source

Rabbit

Isotype

IgG

Purification

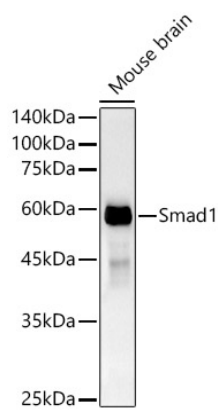
Affinity purification

Storage

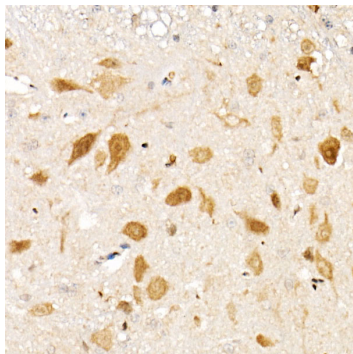
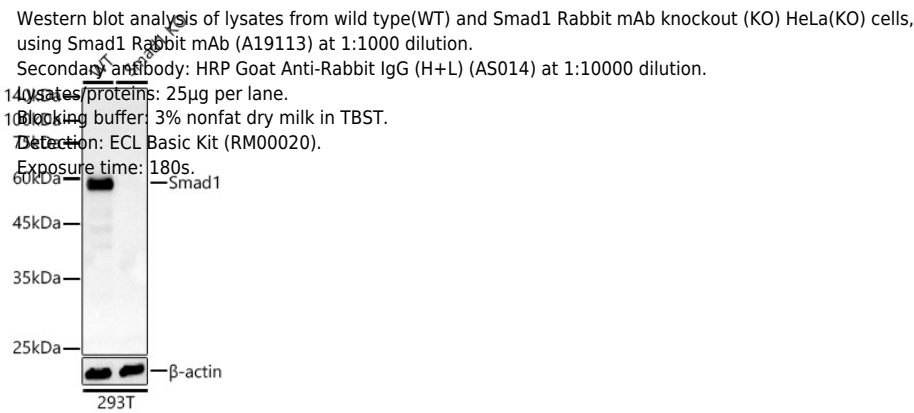
Store at -20°C. Avoid freeze / thaw cycles.

Buffer: PBS with 0.05% proclin300,0.05% BSA,50% glycerol,pH7.3.

Validation Data



Western blot analysis of lysates from Mouse brain, using Smad1 Rabbit mAb (A19113) at 1:1000 dilution.
Secondary antibody: HRP Goat Anti-Rabbit IgG (H+L) (AS014) at 1:10000 dilution.
Lysates/proteins: 25µg per lane.
Blocking buffer: 3% nonfat dry milk in TBST.
Detection: ECL Basic Kit (RM00020).
Exposure time: 180s.



Immunohistochemistry analysis of Smad1 in paraffin-embedded mouse spinal cord using [KO Validated] Smad1 Rabbit mAb (A19113) at dilution of 1:100(40x lens).Perform high pressure antigen retrieval with 10 mM citrate buffer pH 6.0 before commencing with IHC staining protocol.