

A19011

Leader in Biomolecular Solutions for Life Science



CD14 Rabbit mAb

Catalog No.: A19011

Recombinant

4 Publications

Basic Information

Observed MW

50-65kDa

Calculated MW

40kDa

Category

SMab Recombinant Monoclonal Antibody

Applications

WB,IHC-P,IF/ICC,FC,ELISA

Cross-Reactivity

Human,Mouse

CloneNo number

ARC0353

Background

The protein encoded by this gene is a surface antigen that is preferentially expressed on monocytes/macrophages. It cooperates with other proteins to mediate the innate immune response to bacterial lipopolysaccharide, and to viruses. This gene has been identified as a target candidate in the treatment of SARS-CoV-2-infected patients to potentially lessen or inhibit a severe inflammatory response. Alternative splicing results in multiple transcript variants encoding the same protein.

Recommended Dilutions

WB	1:500 - 1:2000
IHC-P	1:50 - 1:200
IF/ICC	1:50 - 1:200
FC	1:50 - 1:200

Immunogen Information

Gene ID

929

Swiss Prot

P08571

Immunogen

A synthetic peptide corresponding to a sequence within amino acids 250-350 of human CD14 (P08571).

Synonyms

CD14

Contact



www.abclonal.com

Product Information

Source

Rabbit

Isotype

IgG

Purification

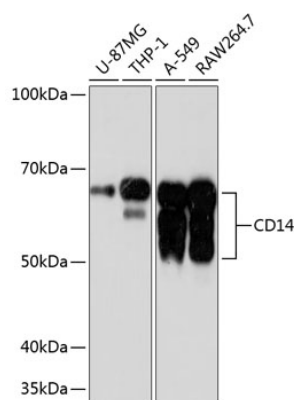
Affinity purification

Storage

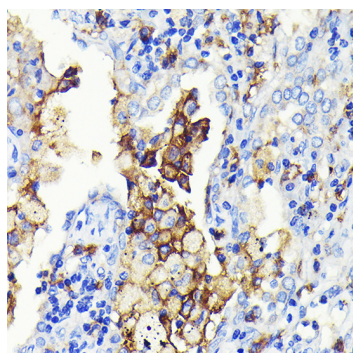
Store at -20°C. Avoid freeze / thaw cycles.

Buffer: PBS with 0.02% sodium azide,0.05% BSA,50% glycerol,pH7.3.

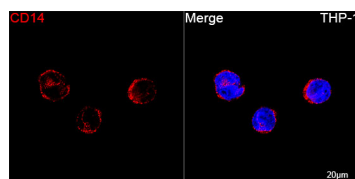
Validation Data



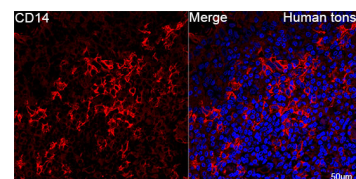
Western blot analysis of various lysates using CD14 Rabbit mAb (A19011) at 1:1000 dilution.
Secondary antibody: HRP Goat Anti-Rabbit IgG (H+L) (AS014) at 1:10000 dilution.
Lysates/proteins: 25µg per lane.
Blocking buffer: 3% nonfat dry milk in TBST.
Detection: ECL Basic Kit (RM00020).
Exposure time: 3min.



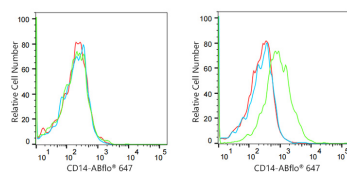
Immunohistochemistry analysis of CD14 in paraffin-embedded human lung cancer using CD14 Rabbit mAb (A19011) at dilution of 1:100 (40x lens). Perform microwave antigen retrieval with 10 mM PBS buffer pH 7.2 before commencing with IHC staining protocol.



Confocal imaging of THP-1 cells using CD14 Rabbit mAb (A19011, dilution 1:100) followed by a further incubation with Cy3 Goat Anti-Rabbit IgG (H+L) (AS007, dilution 1:500) (Red). DAPI was used for nuclear staining (Blue). Objective: 100x.



Confocal imaging of paraffin-embedded Human tonsil using CD14 Rabbit mAb (A19011, dilution 1:100) followed by a further incubation with Cy3 Goat Anti-Rabbit IgG (H+L) (AS007, dilution 1:500) (Red). DAPI was used for nuclear staining (Blue). Objective: 40x. Perform high pressure antigen retrieval with 0.01 M citRate buffer (pH 6.0) prior to IF staining.



Flow cytometry: 1×10^6 Jurkat cells (negative control, left) and A549 cells (right) were surface-stained with CD14 Rabbit mAb (A19011, 10 µg/mL, green line) or Rabbit IgG isotype control (AC042, 10 µg/mL, blue line), followed by Alexa Fluor 647 conjugated goat anti-rabbit pAb (1:600 dilution) staining. Non-fluorescently stained cells were used as blank control (red line).