

A18695

Leader in Biomolecular Solutions for Life Science



[KD Validated] RhoA Rabbit pAb

Catalog No.: A18695

Basic Information

Observed MW

22kDa

Calculated MW

22kDa

Category

Polyclonal Antibody

Applications

WB, ELISA

Cross-Reactivity

Human, Mouse, Rat

Background

This gene encodes a member of the Rho family of small GTPases, which cycle between inactive GDP-bound and active GTP-bound states and function as molecular switches in signal transduction cascades. Rho proteins promote reorganization of the actin cytoskeleton and regulate cell shape, attachment, and motility. Overexpression of this gene is associated with tumor cell proliferation and metastasis. Multiple alternatively spliced variants have been identified.

Recommended Dilutions

WB 1:500 - 1:1000

Immunogen Information

Gene ID

387

Swiss Prot

P61586

Immunogen

A synthetic peptide corresponding to a sequence within amino acids 94-193 of human RhoA (NP_001655.1).

Synonyms

ARHA; ARH12; RHO12; EDFAOB; RHOH12; [KD Validated] RhoA

Contact



www.abclonal.com

Product Information

Source

Rabbit

Isotype

IgG

Purification

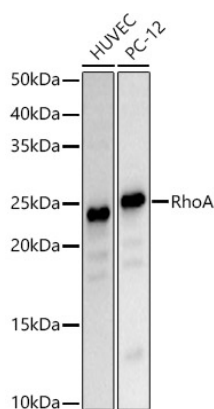
Affinity purification

Storage

Store at -20°C. Avoid freeze / thaw cycles.

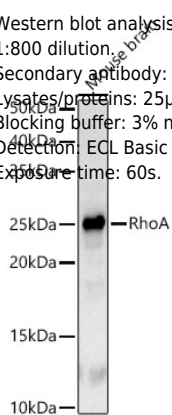
Buffer: PBS with 0.05% proclin300, 50% glycerol, pH7.3.

Validation Data



Western blot analysis of various lysates, using [KD Validated] RhoA Rabbit pAb (A18695) at 1:800 dilution.
 Secondary antibody: HRP Goat Anti-Rabbit IgG (H+L) (A5014) at 1:10000 dilution.
 Lysates/proteins: 25µg per lane.
 Blocking buffer: 3% nonfat dry milk in TBST.
 Detection: ECL Basic Kit (RM00020).
 Exposure time: 30s.

Western blot analysis of lysates from Mouse brain, using [KD Validated] RhoA Rabbit pAb (A18695) at 1:800 dilution.
 Secondary antibody: HRP Goat Anti-Rabbit IgG (H+L) (A5014) at 1:10000 dilution.
 Lysates/proteins: 25µg per lane.
 Blocking buffer: 3% nonfat dry milk in TBST.
 Detection: ECL Basic Kit (RM00020).
 Exposure time: 60s.



Western blot analysis of lysates from wild type(WT) and RhoA knockdown (KD) HeLa cells, using [KD Validated] RhoA Rabbit pAb (A18695) at 1:800 dilution.
 Secondary antibody: HRP Goat Anti-Rabbit IgG (H+L) (A5014) at 1:10000 dilution.
 Lysates/proteins: 25µg per lane.
 Blocking buffer: 3% nonfat dry milk in TBST.
 Detection: ECL Basic Kit (RM00020).
 Exposure time: 30s.

