

A18530

Leader in Biomolecular Solutions for Life Science



SLC26A9 Rabbit pAb

Catalog No.: A18530

Basic Information

Observed MW

87kDa

Calculated MW

87kDa

Category

Polyclonal Antibody

Applications

WB, ELISA

Cross-Reactivity

Human, Mouse

Background

This gene is one member of a family of sulfate/anion transporter genes. Family members are well conserved in their genomic (number and size of exons) and protein (aa length among species) structures yet have markedly different tissue expression patterns. The product of this gene is a highly selective chloride ion channel regulated by WNK kinases. Alternative splicing results in multiple transcript variants encoding differing isoforms.

Recommended Dilutions

WB 1:500 - 1:2000

Immunogen Information

Gene ID

115019

Swiss Prot

Q7LBE3

Immunogen

Recombinant fusion protein containing a sequence corresponding to amino acids 500-660 of human SLC26A9 (NP_443166.1).

Synonyms

SLC26A9

Contact



www.abclonal.com

Product Information

Source

Rabbit

Isotype

IgG

Purification

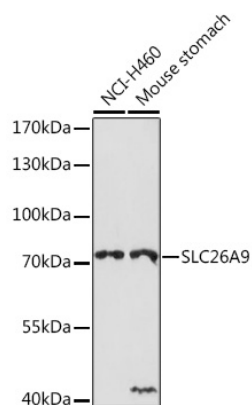
Affinity purification

Storage

Store at -20°C. Avoid freeze / thaw cycles.

Buffer: PBS with 0.01% thimerosal, 50% glycerol, pH 7.3.

Validation Data



Western blot analysis of various lysates using SLC26A9 Rabbit pAb (A18530) at 1:1000 dilution.
Secondary antibody: HRP Goat Anti-Rabbit IgG (H+L) (A5014) at 1:10000 dilution.
Lysates/proteins: 25µg per lane.
Blocking buffer: 3% nonfat dry milk in TBST.
Detection: ECL Basic Kit (RM00020).
Exposure time: 90s.