

A18275

Leader in Biomolecular Solutions for Life Science



CARTPT Rabbit pAb

Catalog No.: A18275

Basic Information

Observed MW

Refer to figures

Calculated MW

13kDa

Category

Polyclonal Antibody

Applications

IHC-P, ELISA

Cross-Reactivity

Human, Mouse, Rat

Background

This gene encodes a preproprotein that is proteolytically processed to generate multiple biologically active peptides. These peptides play a role in appetite, energy balance, maintenance of body weight, reward and addiction, and the stress response. Expression of a similar gene transcript in rodents is upregulated following administration of cocaine and amphetamine. Mutations in this gene are associated with susceptibility to obesity in humans.

Recommended Dilutions

IHC-P 1:50 - 1:200

Immunogen Information

Gene ID

9607

Swiss Prot

Q16568

Immunogen

A synthetic peptide corresponding to a sequence within amino acids 1-100 of human CARTPT (NP_004282.1).

Synonyms

CART; CARTPT

Contact



www.abclonal.com

Product Information

Source

Rabbit

Isotype

IgG

Purification

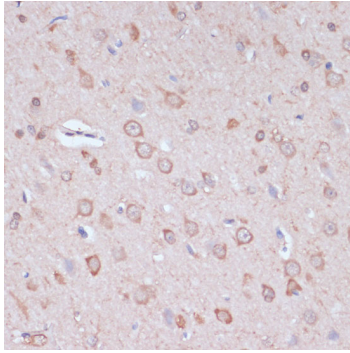
Affinity purification

Storage

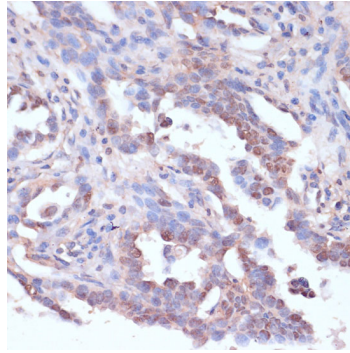
Store at -20°C. Avoid freeze / thaw cycles.

Buffer: PBS with 0.01% thimerosal, 50% glycerol, pH 7.3.

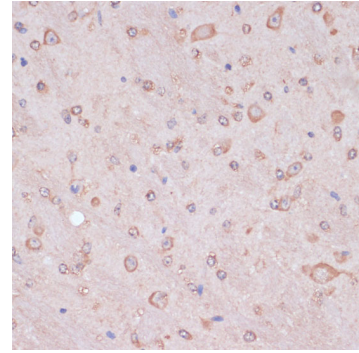
Validation Data



Immunohistochemistry analysis of CARTPT in paraffin-embedded rat brain using CARTPT Rabbit pAb (A18275) at dilution of 1:100 (40x lens). Perform microwave antigen retrieval with 10 mM PBS buffer pH 7.2 before commencing with IHC staining protocol.



Immunohistochemistry analysis of CARTPT in paraffin-embedded human lung cancer using CARTPT Rabbit pAb (A18275) at dilution of 1:100 (40x lens). Perform microwave antigen retrieval with 10 mM PBS buffer pH 7.2 before commencing with IHC staining protocol.



Immunohistochemistry analysis of CARTPT in paraffin-embedded mouse brain using CARTPT Rabbit pAb (A18275) at dilution of 1:100 (40x lens). Perform microwave antigen retrieval with 10 mM PBS buffer pH 7.2 before commencing with IHC staining protocol.