

A17898

Leader in Biomolecular Solutions for Life Science



Alpha-Fetoprotein (AFP) Mouse mAb

Catalog No.: A17898

1 Publications

Basic Information

Observed MW

69kDa

Calculated MW

69kDa

Category

Mouse Monoclonal Antibody

Applications

WB, IHC-P, IF/ICC, ELISA

Cross-Reactivity

Human, Mouse, Rat

CloneNo number

AMC0201

Background

This gene encodes alpha-fetoprotein, a major plasma protein produced by the yolk sac and the liver during fetal life. Alpha-fetoprotein expression in adults is often associated with hepatocarcinoma and with teratoma, and has prognostic value for managing advanced gastric cancer. However, hereditary persistence of alpha-fetoprotein may also be found in individuals with no obvious pathology. The protein is thought to be the fetal counterpart of serum albumin, and the alpha-fetoprotein and albumin genes are present in tandem in the same transcriptional orientation on chromosome 4. Alpha-fetoprotein is found in monomeric as well as dimeric and trimeric forms, and binds copper, nickel, fatty acids and bilirubin. The level of alpha-fetoprotein in amniotic fluid is used to measure renal loss of protein to screen for spina bifida and anencephaly.

Recommended Dilutions

WB	1:500 - 1:2000
IHC-P	1:50 - 1:200
IF/ICC	1:50 - 1:200

Immunogen Information

Gene ID

174

Swiss Prot

P02771

Immunogen

Recombinant fusion protein containing a sequence corresponding to amino acids 19-609 of human Alpha-Fetoprotein (AFP).

Synonyms

AFPD; FETA; HPAFP; Alpha-Fetoprotein (AFP)

Contact



www.abclonal.com

Product Information

Source

Mouse

Isotype

IgG1, Kappa

Purification

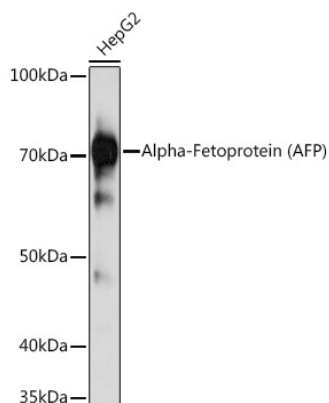
Affinity purification

Storage

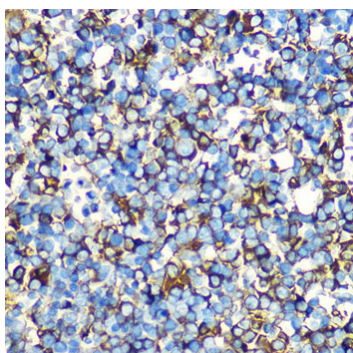
Store at -20°C. Avoid freeze / thaw cycles.

Buffer: PBS with 0.01% thimerosal, 50% glycerol, pH7.3.

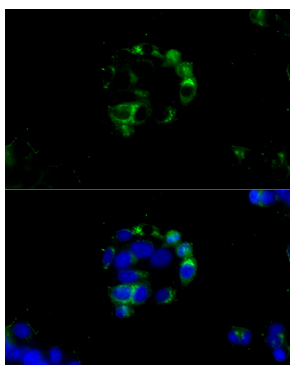
Validation Data



Western blot analysis of lysates from HepG2 cells, using Alpha-Fetoprotein (Alpha-Fetoprotein (AFP)) Mouse mAb (A17898) at 1:1000 dilution.
Secondary antibody: HRP Goat Anti-Mouse IgG (H+L) (AS003) at 1:10000 dilution.
Lysates/proteins: 25µg per lane.
Blocking buffer: 3% nonfat dry milk in TBST.
Detection: ECL Basic Kit (RM00020).
Exposure time: 30s.



Immunohistochemistry analysis of Alpha-Fetoprotein (AFP) in paraffin-embedded Mouse fetal liver using Alpha-Fetoprotein (Alpha-Fetoprotein (AFP)) Mouse mAb (A17898) at dilution of 1:100 (40x lens). Perform microwave antigen retrieval with 10 mM PBS buffer pH 7.2 before commencing with IHC staining protocol.



Immunofluorescence analysis of HepG2 cells using Alpha-Fetoprotein (AFP) Mouse mAb (A17898) at dilution of 1:100 (40x lens). Blue: DAPI for nuclear staining.