

A16946

Leader in Biomolecular Solutions for Life Science



## PEDF/SERPINF1 Rabbit pAb

Catalog No.: A16946

### Basic Information

**Observed MW**

46kDa

**Calculated MW**

46kDa

**Category**

Polyclonal Antibody

**Applications**

WB,IF/ICC,ELISA

**Cross-Reactivity**

Human,Mouse,Rat

### Background

This gene encodes a member of the serpin family that does not display the serine protease inhibitory activity shown by many of the other serpin proteins. The encoded protein is secreted and strongly inhibits angiogenesis. In addition, this protein is a neurotrophic factor involved in neuronal differentiation in retinoblastoma cells. Mutations in this gene were found in individuals with osteogenesis imperfecta, type VI.

### Recommended Dilutions

<b>WB</b>	1:500 - 1:2000
<b>IF/ICC</b>	1:50 - 1:200

### Immunogen Information

<b>Gene ID</b>	<b>Swiss Prot</b>
5176	P36955

**Immunogen**

A synthetic peptide corresponding to a sequence within amino acids 141-240 of human PEDF/SERPINF1 (NP\_002606.3).

**Synonyms**

OI6; OI12; PEDF; EPC-1; PIG35; PEDF/SERPINF1

### Contact



[www.abclonal.com](http://www.abclonal.com)

### Product Information

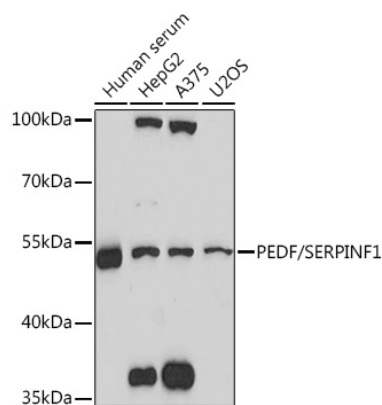
<b>Source</b>	<b>Isotype</b>	<b>Purification</b>
Rabbit	IgG	Affinity purification

**Storage**

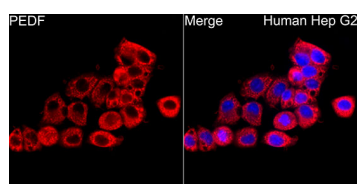
Store at -20°C. Avoid freeze / thaw cycles.

Buffer: PBS with 0.01% thimerosal,50% glycerol,pH7.3.

## Validation Data



Western blot analysis of various lysates using PEDF/PEDF/SERPINF1 Rabbit pAb (A16946) at 1:1000 dilution.  
Secondary antibody: HRP Goat Anti-Rabbit IgG (H+L) (AS014) at 1:10000 dilution.  
Lysates/proteins: 25µg per lane.  
Blocking buffer: 3% nonfat dry milk in TBST.  
Detection: ECL Basic Kit (RM00020).  
Exposure time: 30s.



Immunofluorescence analysis of HepG2 cells using PEDF/SERPINF1 Rabbit pAb (A16946) at dilution of 1:300 (40x lens).  
Secondary antibody: Cy3 Goat Anti-Rabbit IgG (H+L) (AS007) at 1:500 dilution. Blue: DAPI for nuclear staining.