

A16916

Leader in Biomolecular Solutions for Life Science



CD146/MCAM Rabbit pAb

Catalog No.: A16916

Basic Information

Observed MW

120kDa

Calculated MW

72kDa

Category

Polyclonal Antibody

Applications

WB, IHC-P, ELISA

Cross-Reactivity

Human, Mouse

Background

Involved in glomerular filtration and vascular wound healing. Acts upstream of or within angiogenesis. Located in external side of plasma membrane. Biomarker of chronic obstructive pulmonary disease and uveal melanoma.

Recommended Dilutions

WB	1:500 - 1:1000
IHC-P	1:50 - 1:200

Immunogen Information

Gene ID

4162

Swiss Prot

P43121

Immunogen

Recombinant fusion protein containing a sequence corresponding to amino acids 340-560 of human CD146/CD146/MCAM (NP_006491.2).

Synonyms

CD146; MUC18; HEMCAM; METCAM; MeICAM; CD146/MCAM

Contact



www.abclonal.com

Product Information

Source

Rabbit

Isotype

IgG

Purification

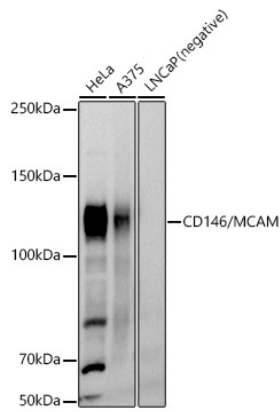
Affinity purification

Storage

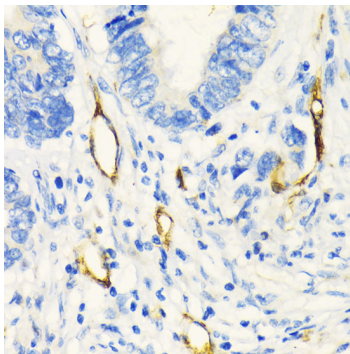
Store at -20°C. Avoid freeze / thaw cycles.

Buffer: PBS with 0.02% sodium azide, 50% glycerol, pH7.3.

Validation Data



Western blot analysis of various lysates, using CD146/MCAM Rabbit pAb (A16916) at 1:1000 dilution.
Secondary antibody: HRP Goat Anti-Rabbit IgG (H+L) (A5014) at 1:10000 dilution.
Lysates/proteins: 25µg per lane.
Blocking buffer: 3% nonfat dry milk in TBST.
Detection: ECL Basic Kit (RM00020).
Exposure time: 30s.



Immunohistochemistry analysis of CD146/MCAM in paraffin-embedded human colon carcinoma using CD146/MCAM Rabbit pAb (A16916) at dilution of 1:100 (40x lens). Perform microwave antigen retrieval with 10 mM PBS buffer pH 7.2 before commencing with IHC staining protocol.