

A16791

Leader in Biomolecular Solutions for Life Science



## CAST Rabbit pAb

Catalog No.: A16791

### Basic Information

#### Observed MW

110-130kDa

#### Calculated MW

77kDa

#### Category

Antibody

#### Applications

WB, ELISA

#### Cross-Reactivity

Human, Rat

### Background

The protein encoded by this gene is an endogenous calpain (calcium-dependent cysteine protease) inhibitor. It consists of an N-terminal domain L and four repetitive calpain-inhibition domains (domains 1-4), and it is involved in the proteolysis of amyloid precursor protein. The calpain/calpastatin system is involved in numerous membrane fusion events, such as neural vesicle exocytosis and platelet and red-cell aggregation. The encoded protein is also thought to affect the expression levels of genes encoding structural or regulatory proteins. Alternatively spliced transcript variants encoding different isoforms have been described.

### Recommended Dilutions

WB 1:500 - 1:1000

### Immunogen Information

#### Gene ID

831

#### Swiss Prot

P20810

#### Immunogen

A synthetic peptide corresponding to a sequence within amino acids 550-650 of human CAST (NP\_001177371.1).

#### Synonyms

BS-17; PLACK; CAST

### Contact



[www.abclonal.com](http://www.abclonal.com)

### Product Information

#### Source

Rabbit

#### Isotype

IgG

#### Purification

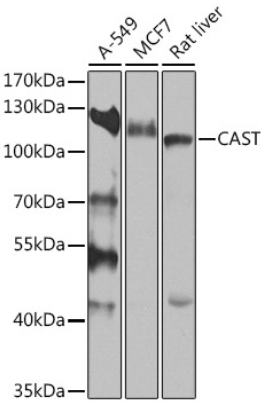
Affinity purification

#### Storage

Store at -20°C. Avoid freeze / thaw cycles.

Buffer: PBS with 0.02% sodium azide, 50% glycerol, pH 7.3.

Validation Data



Western blot analysis of various lysates using CAST Rabbit pAb (A16791) at 1:1000 dilution.  
Secondary antibody: HRP Goat Anti-Rabbit IgG (H+L) (AS014) at 1:10000 dilution.  
Lysates/proteins: 25µg per lane.  
Blocking buffer: 3% nonfat dry milk in TBST.  
Detection: ECL Basic Kit (RM00020).  
Exposure time: 90s.