

A15006

Leader in Biomolecular Solutions for Life Science



KAT6A Rabbit pAb

Catalog No.: A15006

Basic Information

Observed MW

250kDa

Calculated MW

225kDa

Category

Mouse Monoclonal Antibody

Applications

WB, IHC-P, IF/ICC, ELISA

Cross-Reactivity

Human, Mouse, Rat

Background

This gene encodes a member of the MOZ, YBFR2, SAS2, TIP60 family of histone acetyltransferases. The protein is composed of a nuclear localization domain, a double C2H2 zinc finger domain that binds to acetylated histone tails, a histone acetyl-transferase domain, a glutamate/aspartate-rich region, and a serine- and methionine-rich transactivation domain. It is part of a complex that acetylates lysine-9 residues in histone 3, and in addition, it acts as a co-activator for several transcription factors. Allelic variants of this gene are associated with an autosomal dominant form of cognitive disability. Chromosomal translocations of this gene are associated with acute myeloid leukemia. Alternative splicing results in multiple transcript variants.

Recommended Dilutions

WB	1:500 - 1:2000
IHC-P	1:50 - 1:200
IF/ICC	1:50 - 1:200

Immunogen Information

Gene ID

7994

Swiss Prot

Q92794

Immunogen

Recombinant fusion protein containing a sequence corresponding to amino acids 800-1000 of human KAT6A (NP_001092883.1).

Synonyms

MOZ; ARTHS; MRD32; MYST3; MYST-3; ZNF220; RUNXBP2; ZC2HC6A; KAT6A

Contact



www.abclonal.com

Product Information

Source

Rabbit

Isotype

IgG

Purification

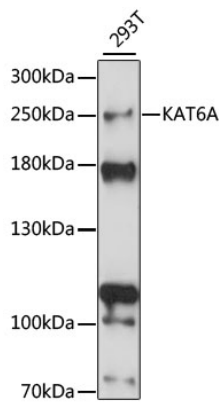
Affinity purification

Storage

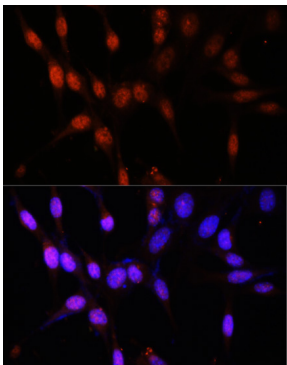
Store at -20°C. Avoid freeze / thaw cycles.

Buffer: PBS with 0.01% thimerosal, 50% glycerol, pH7.3.

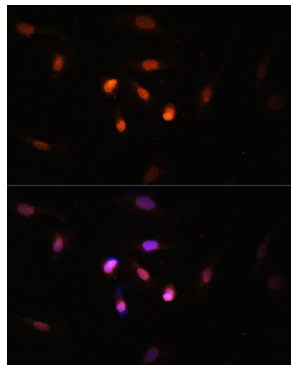
Validation Data



Western blot analysis of lysates from 293T cells, using KAT6A Rabbit pAb (A15006) at 1:1000 dilution.
Secondary antibody: HRP Goat Anti-Rabbit IgG (H+L) (AS014) at 1:10000 dilution.
Lysates/proteins: 25µg per lane.
Blocking buffer: 3% nonfat dry milk in TBST.
Detection: ECL Basic Kit (RM00020).
Exposure time: 10s.



Immunofluorescence analysis of NIH/3T3 cells using KAT6A Rabbit pAb (A15006) at dilution of 1:100. Secondary antibody: Cy3 Goat Anti-Rabbit IgG (H+L) (AS007) at 1:500 dilution. Blue: DAPI for nuclear staining.



Immunofluorescence analysis of U2OS cells using KAT6A Rabbit pAb (A15006) at dilution of 1:100. Secondary antibody: Cy3 Goat Anti-Rabbit IgG (H+L) (AS007) at 1:500 dilution. Blue: DAPI for nuclear staining.