

A14895

Leader in Biomolecular Solutions for Life Science



FXYP7 Rabbit pAb

Catalog No.: A14895

Basic Information

Observed MW

18kDa

Calculated MW

9kDa

Category

Polyclonal Antibody

Applications

WB, ELISA

Cross-Reactivity

Mouse, Rat

Background

This reference sequence was derived from multiple replicate ESTs and validated by similar human genomic sequence. This gene encodes a member of a family of small membrane proteins that share a 35-amino acid signature sequence domain, beginning with the sequence PFXYP and containing 7 invariant and 6 highly conserved amino acids. The approved human gene nomenclature for the family is FXP-domain containing ion transport regulator. Transmembrane topology has been established for two family members (FXYP1 and FXP2), with the N-terminus extracellular and the C-terminus on the cytoplasmic side of the membrane. FXP2, also known as the gamma subunit of the Na,K-ATPase, regulates the properties of that enzyme. FXP1 (phospholemmann), FXP2 (gamma), FXP3 (MAT-8), FXP4 (CHIF), and FXP5 (RIC) have been shown to induce channel activity in experimental expression systems. This gene product, FXP7, is novel and has not been characterized as a protein. [RefSeq curation by Kathleen J. Sweadner, Ph.D., sweadner@helix.mgh.harvard.edu., Dec 2000]

Recommended Dilutions

WB 1:500 - 1:2000

Immunogen Information

Gene ID

53822

Swiss Prot

P58549

Immunogen

Recombinant fusion protein containing a sequence corresponding to amino acids 1-80 of human FXP7 (NP_071289.1).

Synonyms

FXYP7

Contact



www.abclonal.com

Product Information

Source

Rabbit

Isotype

IgG

Purification

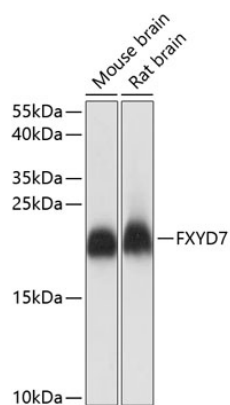
Affinity purification

Storage

Store at -20°C. Avoid freeze / thaw cycles.

Buffer: PBS with 0.01% thimerosal, 50% glycerol, pH7.3.

Validation Data



Western blot analysis of various lysates using FXYP7 Rabbit pAb (A14895) at 1:1000 dilution.
Secondary antibody: HRP Goat Anti-Rabbit IgG (H+L) (A5014) at 1:10000 dilution.
Lysates/proteins: 25µg per lane.
Blocking buffer: 3% nonfat dry milk in TBST.
Detection: ECL Basic Kit (RM00020).
Exposure time: 1s.