

A14195

Leader in Biomolecular Solutions for Life Science



RUVBL1/TIP49A/PONTIN Rabbit pAb

Catalog No.: A14195

Basic Information

Observed MW

50kDa

Calculated MW

50kDa

Category

Polyclonal Antibody

Applications

WB,IF/ICC,ELISA

Cross-Reactivity

Human,Mouse,Rat

Background

This gene encodes a protein that has both DNA-dependent ATPase and DNA helicase activities and belongs to the ATPases associated with diverse cellular activities (AAA+) protein family. The encoded protein associates with several multisubunit transcriptional complexes and with protein complexes involved in both ATP-dependent remodeling and histone modification. Alternate splicing results in multiple transcript variants.

Recommended Dilutions

WB	1:500 - 1:2000
IF/ICC	1:50 - 1:200

Immunogen Information

Gene ID

8607

Swiss Prot

Q9Y265

Immunogen

Recombinant fusion protein containing a sequence corresponding to amino acids 1-214 of human RUVBL1/TIP49A/PONTIN (NP_003698.1).

Synonyms

RVB1; TIH1; ECP54; TIP49; ECP-54; INO80H; NMP238; PONTIN; TIP49A; NMP 238; Pontin52; RUVBL1/TIP49A/PONTIN

Contact



www.abclonal.com

Product Information

Source

Rabbit

Isotype

IgG

Purification

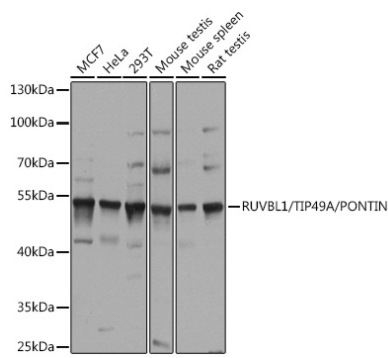
Affinity purification

Storage

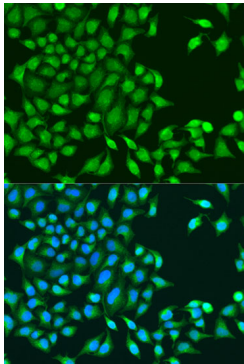
Store at -20°C. Avoid freeze / thaw cycles.

Buffer: PBS with 0.02% sodium azide,50% glycerol,pH7.3.

Validation Data



Western blot analysis of extracts of various cell lines, using RUVBL1/TIP49A/PONTIN antibody (A14195) at 1:1000 dilution.
Secondary antibody: HRP Goat Anti-Rabbit IgG (H+L) (AS014) at 1:10000 dilution.
Lysates/proteins: 25µg per lane.
Blocking buffer: 3% nonfat dry milk in TBST.
Detection: ECL Basic Kit (RM00020).
Exposure time: 10s.



Immunofluorescence analysis of U2OS cells using RUVBL1/TIP49A/PONTIN antibody (A14195) at dilution of 1:100. Blue: DAPI for nuclear staining.