

# IGF2 Mouse mAb

Catalog No.: A1381

## Basic Information

### Observed MW

35kDa

### Calculated MW

20kDa

### Category

Primary antibody

### Applications

ELISA, WB, IHC-P, IF/ICC, FC

### Cross-Reactivity

Human

## Background

This gene encodes a member of the insulin family of polypeptide growth factors, which are involved in development and growth. It is an imprinted gene, expressed only from the paternal allele, and epigenetic changes at this locus are associated with Wilms tumour, Beckwith-Wiedemann syndrome, rhabdomyosarcoma, and Silver-Russell syndrome. A read-through INS-IGF2 gene exists, whose 5' region overlaps the INS gene and the 3' region overlaps this gene. Alternatively spliced transcript variants encoding different isoforms have been found for this gene.

## Recommended Dilutions

WB	1:500 - 1:2000
IHC-P	1:20 - 1:100
IF/ICC	1:20 - 1:100
FC	1:20 - 1:50

## Immunogen Information

### Gene ID

3481

### Swiss Prot

P01344

### Immunogen

A synthetic peptide of human IGF2

### Synonyms

GRDF; SRS3; IGF-II; PP9974; C11orf43; IGF2

## Contact

 | [www.abclonal.com](http://www.abclonal.com)

## Product Information

### Source

Mouse

### Isotype

IgG

### Purification

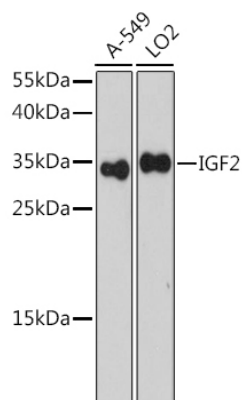
Affinity purification

### Storage

Store at 4°C. Avoid freeze / thaw cycles.

Buffer: PBS with 0.02% sodium azide, pH 7.3.

# Validation Data



Western blot analysis of various lysates using IGF2 Mouse mAb (A1381).  
Secondary antibody: HRP Goat Anti-Mouse IgG (H+L) (AS003) at 1:10000 dilution.  
Lysates/proteins: 25µg per lane.  
Blocking buffer: 3% nonfat dry milk in TBST.