

A12955

Leader in Biomolecular Solutions for Life Science



GMFG Rabbit pAb

Catalog No.: A12955

Basic Information

Observed MW

17kDa

Calculated MW

17kDa

Category

Polyclonal Antibody

Applications

WB, ELISA

Cross-Reactivity

Mouse

Background

Predicted to enable Arp2/3 complex binding activity. Predicted to be involved in actin filament debranching and negative regulation of Arp2/3 complex-mediated actin nucleation. Predicted to be located in extracellular region; ficolin-1-rich granule lumen; and secretory granule lumen.

Recommended Dilutions

WB 1:500 - 1:1000

Immunogen Information

Gene ID

9535

Swiss Prot

O60234

Immunogen

Recombinant fusion protein containing a sequence corresponding to amino acids 1-70 of human GMFG (NP_004868.1).

Synonyms

GMF-GAMMA; GMFG

Contact



www.abclonal.com

Product Information

Source

Rabbit

Isotype

IgG

Purification

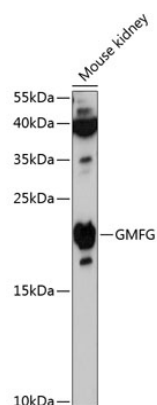
Affinity purification

Storage

Store at -20°C. Avoid freeze / thaw cycles.

Buffer: PBS with 0.01% thimerosal, 50% glycerol, pH7.3.

Validation Data



Western blot analysis of lysates from mouse kidney, using GMFG Rabbit pAb (A12955) at 1:3000 dilution.
Secondary antibody: HRP Goat Anti-Rabbit IgG (H+L) (AS014) at 1:10000 dilution.
Lysates/proteins: 25µg per lane.
Blocking buffer: 3% nonfat dry milk in TBST.
Detection: ECL Basic Kit (RM00020).
Exposure time: 90s.