

A12343

Leader in Biomolecular Solutions for Life Science



Smad7 Rabbit pAb

Catalog No.: A12343

5 Publications

Basic Information

Observed MW

50kDa

Calculated MW

46kDa

Category

Polyclonal Antibody

Applications

WB,IF/ICC,ELISA

Cross-Reactivity

Human,Mouse,Rat

Background

The protein encoded by this gene is a nuclear protein that binds the E3 ubiquitin ligase SMURF2. Upon binding, this complex translocates to the cytoplasm, where it interacts with TGF-beta receptor type-1 (TGFB β R1), leading to the degradation of both the encoded protein and TGFB β R1. Expression of this gene is induced by TGFB β R1. Variations in this gene are a cause of susceptibility to colorectal cancer type 3 (CRCS3). Several transcript variants encoding different isoforms have been found for this gene.

Recommended Dilutions

WB	1:500 - 1:1000
IF/ICC	1:50 - 1:200

Immunogen Information

Gene ID

4092

Swiss Prot

O15105

Immunogen

A synthetic peptide corresponding to a sequence within amino acids 220-420 of human Smad7 (NP_005895.1).

Synonyms

CRCS3; MADH7; MADH8; Smad7

Contact



www.abclonal.com

Product Information

Source

Rabbit

Isotype

IgG

Purification

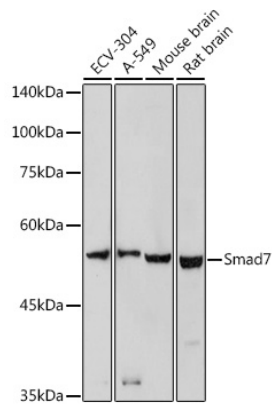
Affinity purification

Storage

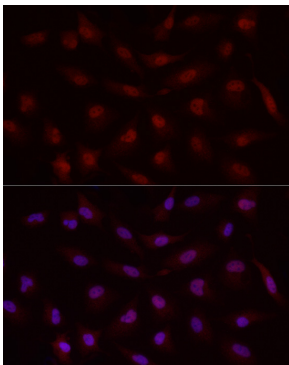
Store at -20°C. Avoid freeze / thaw cycles.

Buffer: PBS with 0.01% thimerosal, 50% glycerol, pH7.3.

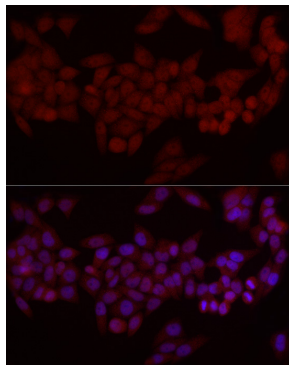
Validation Data



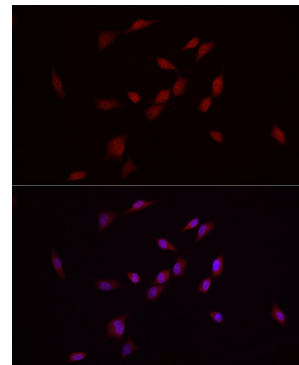
Western blot analysis of extracts of various cell lines, using Smad7 antibody (A12343) at 1:1000 dilution.
Secondary antibody: HRP Goat Anti-Rabbit IgG (H+L) (A5014) at 1:10000 dilution.
Lysates/proteins: 25µg per lane.
Blocking buffer: 3% nonfat dry milk in TBST.
Detection: ECL Basic Kit (RM00020).
Exposure time: 90s.



Immunofluorescence analysis of A-549 cells using Smad7 Rabbit pAb (A12343) at dilution of 1:50 (40x lens). Blue: DAPI for nuclear staining.



Immunofluorescence analysis of HeLa cells using Smad7 Rabbit pAb (A12343) at dilution of 1:50 (40x lens). Blue: DAPI for nuclear staining.



Immunofluorescence analysis of NIH/3T3 cells using Smad7 Rabbit pAb (A12343) at dilution of 1:50 (40x lens). Blue: DAPI for nuclear staining.