

A12329

Leader in Biomolecular Solutions for Life Science



Dot1L/KMT4 Rabbit mAb

Catalog No.: A12329

Recombinant

3 Publications

Basic Information

Observed MW

170kDa

Calculated MW

165kDa

Category

SMab Recombinant Monoclonal Antibody

Applications

WB,IP,ELISA

Cross-Reactivity

Human,Mouse

CloneNo number

ARC0688

Background

The protein encoded by this gene is a histone methyltransferase that methylates lysine-79 of histone H3. It is inactive against free core histones, but shows significant histone methyltransferase activity against nucleosomes.

Recommended Dilutions

WB 1:500 - 1:1000

IP 0.5µg-4µg antibody for
200µg-400µg extracts of
whole cells

Immunogen Information

Gene ID

84444

Swiss Prot

Q8TEK3

Immunogen

A synthetic peptide corresponding to a sequence within amino acids 1-100 of human Dot1L/KMT4 (NP_115871.1).

Synonyms

DOT1; KMT4; Dot1L/KMT4

Contact



www.abclonal.com

Product Information

Source

Rabbit

Isotype

IgG

Purification

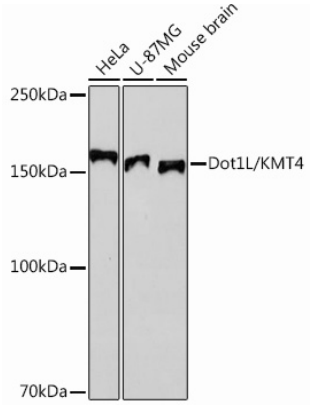
Affinity purification

Storage

Store at -20°C. Avoid freeze / thaw cycles.

Buffer: PBS with 0.02% sodium azide,0.05% BSA,50% glycerol,pH7.3.

Validation Data



Western blot analysis of various lysates using Dot1L/KMT4 Rabbit mAb (A12329) at 1:1000 dilution.
Secondary antibody: HRP Goat Anti-Rabbit IgG (H+L) (AS014) at 1:10000 dilution.
Lysates/proteins: 25µg per lane.
Blocking buffer: 3% nonfat dry milk in TBST.
Detection: ECL Basic Kit (RM00020).
Exposure time: 10s.

Immunoprecipitation analysis of 300 µg extracts from HeLa cells using 3 µg Dot1L/KMT4 Rabbit mAb (A12329). Western blot was performed from the immunoprecipitate using Dot1L/KMT4 Rabbit mAb (A12329) at a dilution of 1:1000.

