

A12238

Leader in Biomolecular Solutions for Life Science



Aromatase (CYP19A1) Rabbit mAb

Catalog No.: A12238

Recombinant

Basic Information

Observed MW

58kDa

Calculated MW

58kDa

Category

SMab Recombinant Monoclonal Antibody

Applications

WB, IHC-P, IF/ICC, ELISA

Cross-Reactivity

Human

CloneNo number

ARC0635

Background

This gene encodes a member of the cytochrome P450 superfamily of enzymes. The cytochrome P450 proteins are monooxygenases which catalyze many reactions involved in drug metabolism and synthesis of cholesterol, steroids and other lipids. This protein localizes to the endoplasmic reticulum and catalyzes the last steps of estrogen biosynthesis. Mutations in this gene can result in either increased or decreased aromatase activity; the associated phenotypes suggest that estrogen functions both as a sex steroid hormone and in growth or differentiation. Alternative promoter use and alternative splicing results in multiple transcript variants that have different tissue specificities.

Recommended Dilutions

| | |
|--------|----------------|
| WB | 1:500 - 1:1000 |
| IHC-P | 1:50 - 1:200 |
| IF/ICC | 1:50 - 1:200 |

Immunogen Information

Gene ID

1588

Swiss Prot

P11511

Immunogen

A synthetic peptide corresponding to a sequence within amino acids 1-100 of human Aromatase (CYP19A1) (P11511).

Synonyms

ARO; ARO1; CPV1; CYAR; CYP19; CYPXIX; P-450AROM; Aromatase (CYP19A1)

Contact



www.abclonal.com

Product Information

Source

Rabbit

Isotype

IgG

Purification

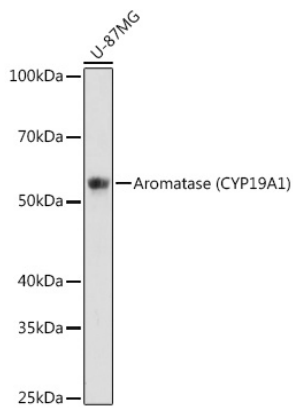
Affinity purification

Storage

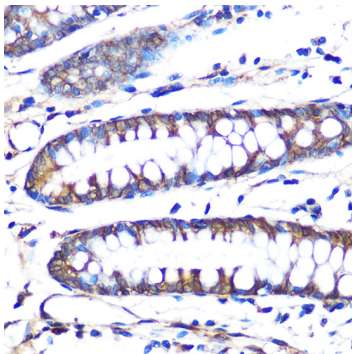
Store at -20°C. Avoid freeze / thaw cycles.

Buffer: PBS with 0.02% sodium azide, 0.05% BSA, 50% glycerol, pH 7.3.

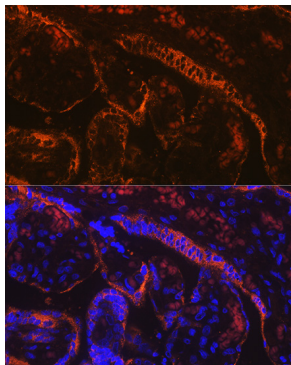
Validation Data



Western blot analysis of extracts of U-87MG cells, using Aromatase (CYP19A1) antibody (A12238) at 1:1000 dilution.
Secondary antibody: HRP Goat Anti-Rabbit IgG (H+L) (AS014) at 1:10000 dilution.
Lysates/proteins: 25µg per lane.
Blocking buffer: 3% nonfat dry milk in TBST.
Detection: ECL Enhanced Kit (RM00021).
Exposure time: 180s.



Immunohistochemistry analysis of paraffin-embedded human colon using Aromatase (CYP19A1) Rabbit mAb (A12238) at dilution of 1:100 (40x lens). Perform microwave antigen retrieval with 10 mM PBS buffer pH 7.2 before commencing with IHC staining protocol.



Immunofluorescence analysis of human placenta using Aromatase (CYP19A1) Rabbit mAb (A12238) at dilution of 1:100 (40x lens). Blue: DAPI for nuclear staining.