

A11985

Leader in Biomolecular Solutions for Life Science



IGF1 Rabbit pAb

Catalog No.: A11985

15 Publications

Basic Information

Observed MW

18kDa

Calculated MW

22kDa

Category

Polyclonal Antibody

Applications

WB, IHC-P, ELISA

Cross-Reactivity

Human, Mouse, Rat

Background

The protein encoded by this gene is similar to insulin in function and structure and is a member of a family of proteins involved in mediating growth and development. The encoded protein is processed from a precursor, bound by a specific receptor, and secreted. Defects in this gene are a cause of insulin-like growth factor I deficiency. Alternative splicing results in multiple transcript variants encoding different isoforms that may undergo similar processing to generate mature protein.

Recommended Dilutions

| | |
|-------|----------------|
| WB | 1:500 - 1:2000 |
| IHC-P | 1:50 - 1:100 |

Immunogen Information

Gene ID

3479

Swiss Prot

P05019

Immunogen

A synthetic peptide corresponding to a sequence within amino acids 50-150 of human IGF1 (NP_000609.1).

Synonyms

IGF; MGF; IGFI; IGF-I; IGF1

Contact



www.abclonal.com

Product Information

Source

Rabbit

Isotype

IgG

Purification

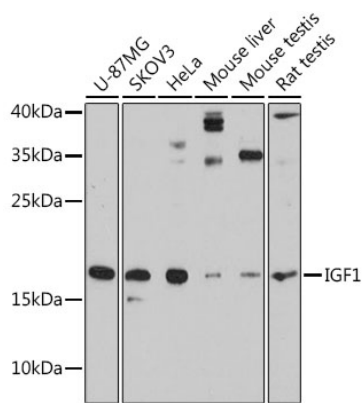
Affinity purification

Storage

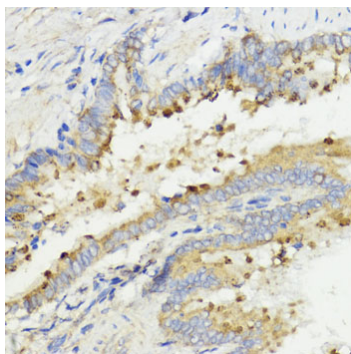
Store at -20°C. Avoid freeze / thaw cycles.

Buffer: PBS with 0.09% Sodium azide, 50% glycerol, pH 7.3.

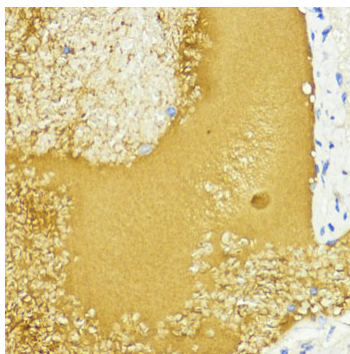
Validation Data



Western blot analysis of various lysates using IGF1 Rabbit pAb (A11985) at 1:3000 dilution. Secondary antibody: HRP Goat Anti-Rabbit IgG (H+L) (AS014) at 1:10000 dilution. Lysates/proteins: 25µg per lane. Blocking buffer: 3% nonfat dry milk in TBST. Detection: ECL Basic Kit (RM00020). Exposure time: 90s.



Immunohistochemistry analysis of IGF1 in paraffin-embedded rat lung using IGF1 Rabbit pAb (A11985) at dilution of 1:100 (40x lens). Perform microwave antigen retrieval with 10 mM PBS buffer pH 7.2 before commencing with IHC staining protocol.



Immunohistochemistry analysis of IGF1 in paraffin-embedded mouse liver using IGF1 Rabbit pAb (A11985) at dilution of 1:100 (40x lens). Perform microwave antigen retrieval with 10 mM PBS buffer pH 7.2 before commencing with IHC staining protocol.