

## beta Catenin Polyclonal Antibody

<b>Catalog No.</b>	A11932	<b>Category</b>	Polyclonal Antibodies
<b>Applications</b>	WB, IF, IP	<b>Observed MW</b>	100kDa
<b>Cross-reactivity</b>	Human, Mouse, Rat	<b>Calculated MW</b>	9kDa/85kDa

### Immunogen Information

<b>Immunogen</b>	Recombinant protein of human beta Catenin
<b>Gene ID</b>	1499
<b>Swiss prot</b>	P35222
<b>Synonyms</b>	CTNNB1; CTNNB; MRD19; armadillo; catenin beta-1

### Product information

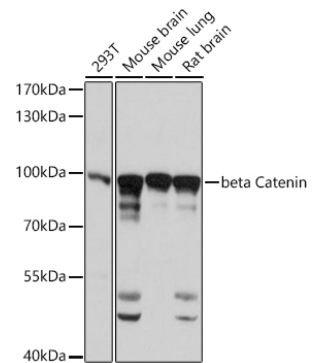
<b>Source</b>	Rabbit
<b>Isotype</b>	IgG
<b>Purification method</b>	Affinity purification
<b>Storage</b>	Store at -20°C. Avoid freeze / thaw cycles. Buffer: PBS with 0.02% sodium azide, 50% glycerol, pH 7.3.

### Background

The protein encoded by this gene is part of a complex of proteins that constitute adherens junctions (AJs). AJs are necessary for the creation and maintenance of epithelial cell layers by regulating cell growth and adhesion between cells. The encoded protein also anchors the actin cytoskeleton and may be responsible for transmitting the contact inhibition signal that causes cells to stop dividing once the epithelial sheet is complete. Finally, this protein binds to the product of the APC gene, which is mutated in adenomatous polyposis of the colon. Mutations in this gene are a cause of colorectal cancer (CRC), pilomatixoma (PTR), medulloblastoma (MDB), and ovarian cancer. Alternative splicing results in multiple transcript variants.

### Recommended Dilutions

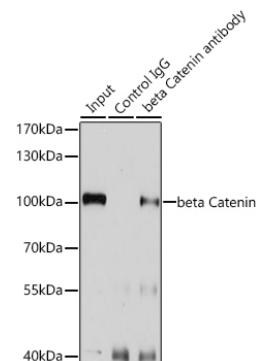
WB	1:500 - 1:2000
IF	1:50 - 1:100
IP	1:20 - 1:50



Western blot analysis of extracts of various cell lines, using beta Catenin antibody (A11932) at 1:3000 dilution. Secondary antibody: HRP Goat Anti-Rabbit IgG (H+L) (AS014) at 1:10000 dilution.

Lysates/proteins: 25ug per lane. Blocking buffer: 3% nonfat dry milk in TBST.

Detection: ECL Basic Kit (RM00020). Exposure time: 10s.



Immunoprecipitation analysis of 200ug extracts of U-87MG cells using 3ug beta Catenin antibody (A11932). Western blot was performed from the immunoprecipitate using beta Catenin antibody (A11932) at a dilution of 1:1000.