

CDKN1B/p27KIP1

Catalog No.: A11800

Basic Information

Observed MW

22kDa

Calculated MW

22kDa

Category

Primary antibody

Applications

WB

Cross-Reactivity

Human, Mouse

Background

This gene encodes a cyclin-dependent kinase inhibitor, which shares a limited similarity with CDK inhibitor CDKN1A/p21. The encoded protein binds to and prevents the activation of cyclin E-CDK2 or cyclin D-CDK4 complexes, and thus controls the cell cycle progression at G1. The degradation of this protein, which is triggered by its CDK dependent phosphorylation and subsequent ubiquitination by SCF complexes, is required for the cellular transition from quiescence to the proliferative state. Mutations in this gene are associated with multiple endocrine neoplasia type IV (MEN4).

Recommended Dilutions

WB 1:500 - 1:1000

Immunogen Information

Gene ID

1027

Swiss Prot

P46527

Immunogen

Recombinant protein of human p27 KIP 1

Synonyms

KIP1; MEN4; CDKN4; MEN1B; P27KIP1

Contact

 | www.abclonal.com

Product Information

Source

Mouse

Isotype

IgG

Purification

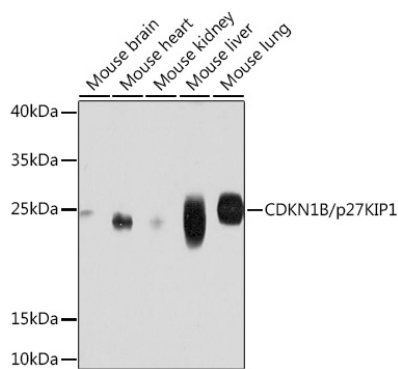
Affinity purification

Storage

Store at -20°C. Avoid freeze / thaw cycles.

Buffer: PBS with 0.02% sodium azide, 50% glycerol, pH7.3.

Validation Data



Western blot analysis of extracts of various cell lines, using p27 KIP 1 antibody (A11800) at 1:1000 dilution.
Secondary antibody: HRP Goat Anti-Mouse IgG (H+L) (A5003) at 1:10000 dilution.
Lysates/proteins: 25µg per lane.
Blocking buffer: 3% nonfat dry milk in TBST.
Detection: ECL Basic Kit (RM00020).
Exposure time: 90s.