

TPM1 Rabbit pAb

Catalog No.	A1157	Category	Polyclonal Antibodies
Applications	WB, IHC, IF	Observed MW	36kDa
Cross-reactivity	Human, Mouse, Rat, Zebrafish	Calculated MW	26kDa/28kDa/32kDa

Immunogen Information

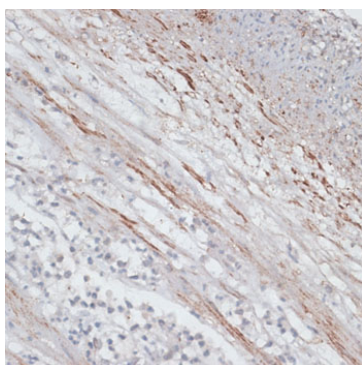
Immunogen	Recombinant fusion protein containing a sequence corresponding to amino acids 1-245 of human TPM1 (NP_001018008.1).
Gene ID	7168
Swiss prot	P09493
Synonyms	TPM1;C15orf13;CMD1Y;CMH3;HEL-S-265;HTM-alpha;L VNC9;TMSA

Product information

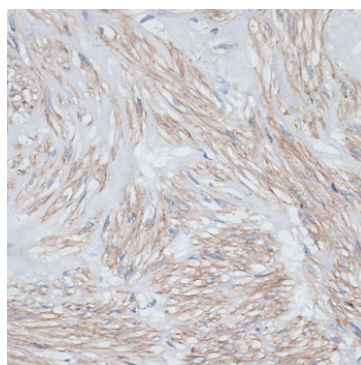
Source	Rabbit
Isotype	IgG
Purification method	Affinity purification
Storage	Store at -20°C. Avoid freeze / thaw cycles. Buffer: PBS with 0.02% sodium azide, 50% glycerol, pH 7.3.

Background

This gene is a member of the tropomyosin family of highly conserved, widely distributed actin-binding proteins involved in the contractile system of striated and smooth muscles and the cytoskeleton of non-muscle cells. Tropomyosin is composed of two alpha-helical chains arranged as a coiled-coil. It is polymerized end to end along the two grooves of actin filaments and provides stability to the filaments. The encoded protein is one type of alpha helical chain that forms the predominant tropomyosin of striated muscle, where it also functions in association with the troponin complex to regulate the calcium-dependent interaction of actin and myosin during muscle contraction. In smooth muscle and non-muscle cells, alternatively spliced transcript variants encoding a range of isoforms have been described. Mutations in this gene are associated with type 3 familial hypertrophic cardiomyopathy.



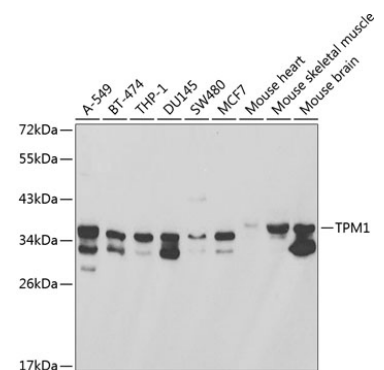
Immunohistochemistry of paraffin-embedded human appendix using TPM1 antibody (A1157) at dilution of 1:100 (40x lens).



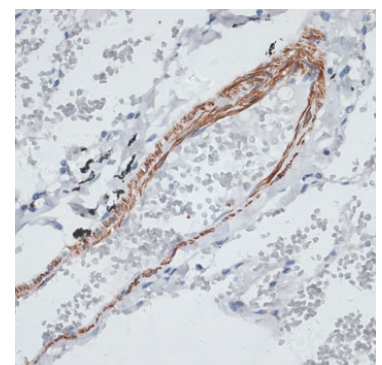
Immunohistochemistry of paraffin-embedded human uterus using TPM1 antibody (A1157) at dilution of 1:100 (40x lens).

Recommended Dilutions

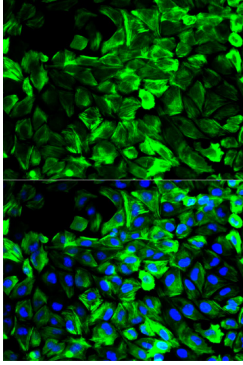
WB	1:500 - 1:2000
IHC	1:50 - 1:200
IF	1:50 - 1:200



Western blot analysis of extracts of various cell lines, using TPM1 antibody (A1157) at 1:1000 dilution. Secondary antibody: HRP Goat Anti-Rabbit IgG (H+L) (AS014) at 1:10000 dilution. Lysates/proteins: 25ug per lane. Blocking buffer: 3% nonfat dry milk in TBST.



Immunohistochemistry of paraffin-embedded human lung using TPM1 antibody (A1157) at dilution of 1:100 (40x lens).



Immunofluorescence analysis of HeLa cells using TPM1 antibody (A1157). Blue: DAPI for nuclear staining.