

A11522

Leader in Biomolecular Solutions for Life Science



## MTCO2 Rabbit pAb

Catalog No.: A11522

7 Publications

### Basic Information

#### Observed MW

23kDa

#### Calculated MW

26kDa

#### Category

Polyclonal Antibody

#### Applications

WB, IHC-P, ELISA

#### Cross-Reactivity

Mouse, Rat

### Background

Predicted to enable copper ion binding activity and oxidoreductase activity. Predicted to contribute to cytochrome-c oxidase activity. Predicted to be involved in ATP synthesis coupled electron transport; positive regulation of cellular biosynthetic process; and positive regulation of necrotic cell death. Located in mitochondrion. Is expressed in embryo; epiblast; heart; liver; and metanephros. Orthologous to several human genes including MTCO2P12 (MT-CO2 pseudogene 12).

### Recommended Dilutions

WB	1:500 - 1:2000
IHC-P	1:100 - 1:500

### Immunogen Information

#### Gene ID

17709

#### Swiss Prot

P00403

#### Immunogen

A synthetic peptide corresponding to a sequence within amino acids 101-200 of mouse MTCO2 (NP\_904331.1).

#### Synonyms

COX2; MTCO2

### Contact



[www.abclonal.com](http://www.abclonal.com)

### Product Information

#### Source

Rabbit

#### Isotype

IgG

#### Purification

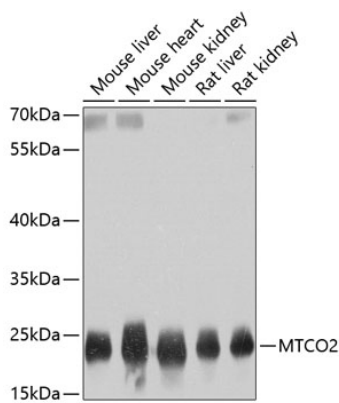
Affinity purification

#### Storage

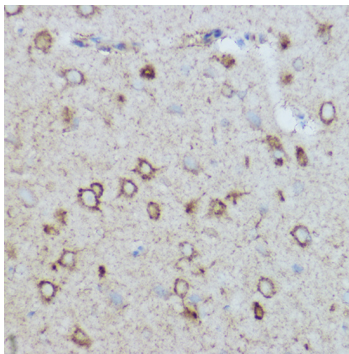
Store at -20°C. Avoid freeze / thaw cycles.

Buffer: PBS with 0.02% sodium azide, 50% glycerol, pH 7.3.

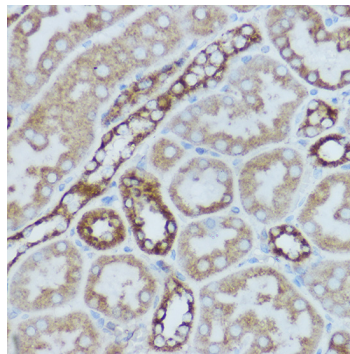
## Validation Data



Western blot analysis of extracts of various cell lines, using MTCO2 antibody (A11522) at 1:800 dilution.  
Secondary antibody: HRP Goat Anti-Rabbit IgG (H+L) (A5014) at 1:10000 dilution.  
Lysates/proteins: 25µg per lane.  
Blocking buffer: 3% nonfat dry milk in TBST.  
Detection: ECL Basic Kit (RM00020).  
Exposure time: 1s.



Immunohistochemistry analysis of paraffin-embedded mouse brain using MTCO2 Rabbit pAb (A11522) at dilution of 1:400 (40x lens). Perform high pressure antigen retrieval with 10 mM citrate buffer pH 6.0 before commencing with IHC staining protocol.



Immunohistochemistry analysis of paraffin-embedded rat kidney using MTCO2 Rabbit pAb (A11522) at dilution of 1:400 (40x lens). Perform high pressure antigen retrieval with 10 mM citrate buffer pH 6.0 before commencing with IHC staining protocol.