

A11380

Leader in Biomolecular Solutions for Life Science



## DNAJC15 Rabbit mAb

Catalog No.: A11380

Recombinant

### Basic Information

#### Observed MW

16kDa

#### Calculated MW

16kDa

#### Category

SMab Recombinant Monoclonal Antibody

#### Applications

WB, IHC-P, ELISA

#### Cross-Reactivity

Human, Mouse, Rat

### Background

Predicted to enable ATPase activator activity. Predicted to be involved in protein import into mitochondrial matrix. Predicted to act upstream of or within several processes, including cellular response to starvation; negative regulation of mitochondrial electron transport, NADH to ubiquinone; and negative regulation of protein-containing complex assembly. Predicted to be located in mitochondrial inner membrane. Predicted to be part of PAM complex, Tim23 associated import motor.

### Recommended Dilutions

WB	1:500 - 1:2000
IHC-P	1:50 - 1:200

### Immunogen Information

#### Gene ID

29103

#### Swiss Prot

Q9Y5T4

#### Immunogen

Recombinant protein of human DNAJC15

#### Synonyms

MCJ; HSD18; DNAJD1; DNAJC15

### Contact



[www.abclonal.com](http://www.abclonal.com)

### Product Information

#### Source

Rabbit

#### Isotype

IgG

#### Purification

Affinity purification

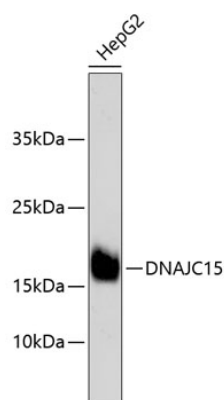
#### Storage

Store at -20°C. Avoid freeze / thaw cycles.

Buffer: PBS with 0.02% sodium azide, 50% glycerol, pH 7.3.

## Validation Data

---



Western blot analysis of extracts of HepG2 cells, using DNAJC15 antibody (A11380).  
Secondary antibody: HRP Goat Anti-Rabbit IgG (H+L) (AS014) at 1:10000 dilution.  
Lysates/proteins: 25µg per lane.  
Blocking buffer: 3% nonfat dry milk in TBST.