

A11364

Leader in Biomolecular Solutions for Life Science



Alpha-1 Antichymotrypsin (SERPINA3) Rabbit mAb

Catalog No.: A11364

Recombinant

Basic Information

Observed MW

50-70kDa

Calculated MW

48kDa

Category

SMab Recombinant Monoclonal Antibody

Applications

WB, ELISA

Cross-Reactivity

Human

CloneNo number

ARC0581

Background

The protein encoded by this gene is a member of the serpin family of proteins, a group of proteins that inhibit serine proteases. This gene is one in a cluster of serpin genes located on the q arm of chromosome 14. Polymorphisms in this protein appear to be tissue specific and influence protease targeting. Variations in this protein's sequence have been implicated in Alzheimer's disease, and deficiency of this protein has been associated with liver disease. Mutations have been identified in patients with Parkinson disease and chronic obstructive pulmonary disease.

Recommended Dilutions

WB 1:500 - 1:1000

Immunogen Information

Gene ID

12

Swiss Prot

P01011

Immunogen

Recombinant fusion protein containing a sequence corresponding to amino acids 1-423 of human Alpha-1 Antichymotrypsin (SERPINA3) (P01011).

Synonyms

ACT; AACT; GIG24; GIG25; Alpha-1 Antichymotrypsin (SERPINA3)

Contact



www.abclonal.com

Product Information

Source

Rabbit

Isotype

IgG

Purification

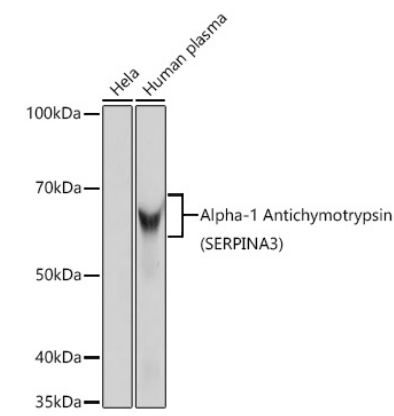
Affinity purification

Storage

Store at -20°C. Avoid freeze / thaw cycles.

Buffer: PBS with 0.02% sodium azide, 0.05% BSA, 50% glycerol, pH7.3.

Validation Data



Western blot analysis of extracts of various cell lines, using Alpha-1 Antichymotrypsin (SERPINA3) Rabbit mAb (A11364) at 1:1000 dilution.
Secondary antibody: HRP Goat Anti-Rabbit IgG (H+L) (AS014) at 1:10000 dilution.
Lysates/proteins: 25µg per lane.
Blocking buffer: 3% nonfat dry milk in TBST.
Detection: ECL Basic Kit (RM00020).
Exposure time: 30s.