

A11278

Leader in Biomolecular Solutions for Life Science



ASH2L Rabbit mAb

Catalog No.: A11278

Recombinant

Basic Information

Observed MW

69kDa

Calculated MW

69kDa

Category

SMab Recombinant Monoclonal Antibody

Applications

WB, IHC-P, IF/ICC, ELISA

Cross-Reactivity

Human, Mouse, Rat

Background

Enables beta-catenin binding activity and transcription cis-regulatory region binding activity. Contributes to histone methyltransferase activity (H3-K4 specific). Involved in histone H3-K4 methylation; positive regulation of cell population proliferation; and response to estrogen. Acts upstream of or within cellular response to DNA damage stimulus. Located in nucleus. Part of MLL3/4 complex and Set1C/COMPASS complex.

Recommended Dilutions

WB	1:500 - 1:2000
IHC-P	1:50 - 1:200
IF/ICC	1:50 - 1:200

Immunogen Information

Gene ID

9070

Swiss Prot

Q9UBL3

Immunogen

Recombinant protein of human ASH2L

Synonyms

ASH2; Bre2; ASH2L1; ASH2L2; ASH2L

Contact



www.abclonal.com

Product Information

Source

Rabbit

Isotype

IgG

Purification

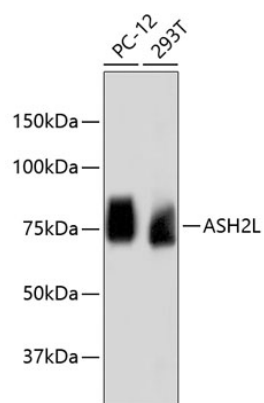
Affinity purification

Storage

Store at -20°C. Avoid freeze / thaw cycles.

Buffer: PBS with 0.02% sodium azide, 50% glycerol, pH 7.3.

Validation Data



Western blot analysis of extracts of various cell lines, using ASH2L antibody (A11278).
Secondary antibody: HRP Goat Anti-Rabbit IgG (H+L) (AS014) at 1:10000 dilution.
Lysates/proteins: 25µg per lane.
Blocking buffer: 3% nonfat dry milk in TBST.