

A11170

Leader in Biomolecular Solutions for Life Science



GLUT1/SLC2A1 Rabbit mAb

Catalog No.: A11170

Recombinant

4 Publications

Basic Information

Observed MW

40kDa

Calculated MW

54kDa

Category

SMab Recombinant Monoclonal Antibody

Applications

WB, IHC-P, IF/ICC, ELISA

Cross-Reactivity

Human, Mouse, Rat

Background

This gene encodes a major glucose transporter in the mammalian blood-brain barrier. The encoded protein is found primarily in the cell membrane and on the cell surface, where it can also function as a receptor for human T-cell leukemia virus (HTLV) I and II. Mutations in this gene have been found in a family with paroxysmal exertion-induced dyskinesia.

Recommended Dilutions

WB	1:500 - 1:2000
IHC-P	1:50 - 1:200
IF/ICC	1:50 - 1:200

Immunogen Information

Gene ID

6513

Swiss Prot

P11166

Immunogen

Recombinant protein of human GLUT1

Synonyms

CSE; PED; DYT9; GLUT; DYT17; DYT18; EIG12; GLUT1; HTLVR; GLUT-1; SDCHCN; GLUT1DS; GLUT1/SLC2A1

Contact



www.abclonal.com

Product Information

Source

Rabbit

Isotype

IgG

Purification

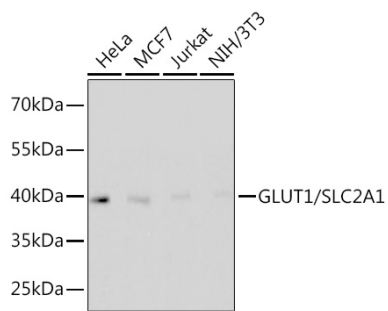
Affinity purification

Storage

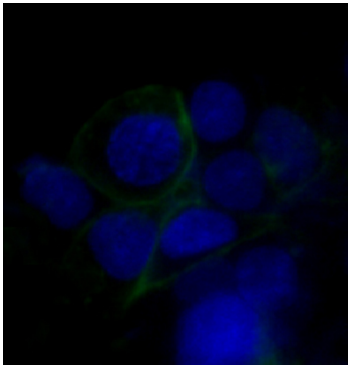
Store at -20°C. Avoid freeze / thaw cycles.

Buffer: PBS with 0.02% sodium azide, 50% glycerol, pH 7.3.

Validation Data



Western blot analysis of extracts of various cell lines, using GLUT1 antibody (A11170).
Secondary antibody: HRP Goat Anti-Rabbit IgG (H+L) (AS014) at 1:10000 dilution.
Lysates/proteins: 25µg per lane.
Blocking buffer: 3% nonfat dry milk in TBST.



Immunofluorescence analysis of HepG2 cells using GLUT1 antibody (A11170). Blue: DAPI for nuclear staining.