

A11095

Leader in Biomolecular Solutions for Life Science



Cyclophilin B Rabbit mAb

Catalog No.: A11095 **Recombinant**

Basic Information

Observed MW

18kDa

Calculated MW

24kDa

Category

SMab Recombinant Monoclonal Antibody

Applications

WB, ELISA

Cross-Reactivity

Human, Mouse, Rat

Background

The protein encoded by this gene is a cyclosporine-binding protein and is mainly located within the endoplasmic reticulum. It is associated with the secretory pathway and released in biological fluids. This protein can bind to cells derived from T- and B-lymphocytes, and may regulate cyclosporine A-mediated immunosuppression. Variants have been identified in this protein that give rise to recessive forms of osteogenesis imperfecta.

Recommended Dilutions

WB 1:500 - 1:2000

Immunogen Information

Gene ID

5479

Swiss Prot

P23284

Immunogen

Recombinant protein of human Cyclophilin B

Synonyms

OI9; CYPB; SCYLP; CYP-S1; HEL-S-39; Cyclophilin B

Contact



www.abclonal.com

Product Information

Source

Rabbit

Isotype

IgG

Purification

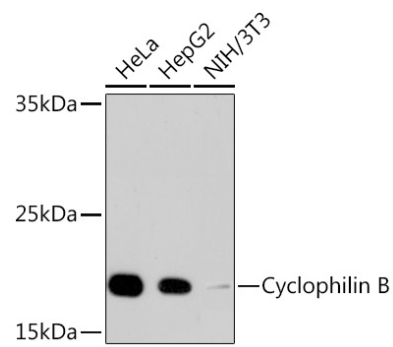
Affinity purification

Storage

Store at -20°C. Avoid freeze / thaw cycles.

Buffer: PBS with 0.02% sodium azide, 0.05% BSA, 50% glycerol, pH7.3.

Validation Data



Western blot analysis of extracts of various cell lines, using Cyclophilin B antibody (A11095).
Secondary antibody: HRP Goat Anti-Rabbit IgG (H+L) (A5014) at 1:10000 dilution.
Lysates/proteins: 25µg per lane.
Blocking buffer: 3% nonfat dry milk in TBST.