

A11023

Leader in Biomolecular Solutions for Life Science



## MMP14/MT1-MMP Rabbit mAb

Catalog No.: A11023

Recombinant

### Basic Information

#### Observed MW

66kDa

#### Calculated MW

66kDa

#### Category

SMab Recombinant Monoclonal Antibody

#### Applications

WB, IHC-P, IF/ICC, IP, ELISA

#### Cross-Reactivity

Human, Mouse, Rat

### Background

Proteins of the matrix metalloproteinase (MMP) family are involved in the breakdown of extracellular matrix in normal physiological processes, such as embryonic development, reproduction, and tissue remodeling, as well as in disease processes, such as arthritis and metastasis. Most MMP's are secreted as inactive proproteins which are activated when cleaved by extracellular proteinases. However, the protein encoded by this gene is a member of the membrane-type MMP (MT-MMP) subfamily; each member of this subfamily contains a potential transmembrane domain suggesting that these proteins are expressed at the cell surface rather than secreted. This protein activates MMP2 protein, and this activity may be involved in tumor invasion.

### Recommended Dilutions

WB	1:500 - 1:2000
IHC-P	1:50 - 1:200
IF/ICC	1:50 - 1:200
IP	1:20 - 1:50

### Immunogen Information

#### Gene ID

4323

#### Swiss Prot

P50281

#### Immunogen

Recombinant protein of human MMP14/MMP14/MT1-MMP

#### Synonyms

MMP-14; MMP-X1; MT-MMP; MT1MMP; MTMMP1; WNCHRS; MT1-MMP; MT-MMP 1; MMP14/MT1-MMP

### Contact



[www.abclonal.com](http://www.abclonal.com)

### Product Information

#### Source

Rabbit

#### Isotype

IgG

#### Purification

Affinity purification

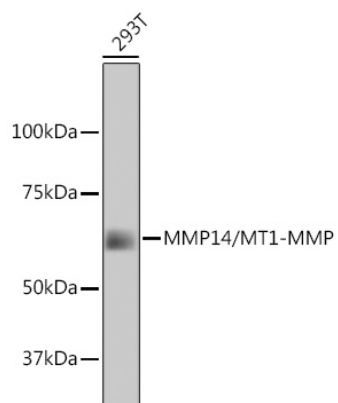
#### Storage

Store at -20°C. Avoid freeze / thaw cycles.

Buffer: PBS with 0.02% sodium azide, 50% glycerol, pH 7.3.

## Validation Data

---



Western blot analysis of extracts of 293T cells, using MMP14/MMP14/MT1-MMP antibody (A11023).  
Secondary antibody: HRP Goat Anti-Rabbit IgG (H+L) (AS014) at 1:10000 dilution.  
Lysates/proteins: 25µg per lane.  
Blocking buffer: 3% nonfat dry milk in TBST.