

A10999

Leader in Biomolecular Solutions for Life Science



KITLG Mouse mAb

Catalog No.: A10999

Basic Information

Observed MW

48kDa

Calculated MW

31kDa

Category

SMab Recombinant Monoclonal Antibody

Applications

WB,IHC-P,IF/ICC,IP,ELISA

Cross-Reactivity

Human,Mouse,Rat

Background

This gene encodes the ligand of the tyrosine-kinase receptor encoded by the KIT locus. This ligand is a pleiotropic factor that acts in utero in germ cell and neural cell development, and hematopoiesis, all believed to reflect a role in cell migration. In adults, it functions pleiotropically, while mostly noted for its continued requirement in hematopoiesis. Two transcript variants encoding different isoforms have been found for this gene.

Recommended Dilutions

| | |
|--------|----------------|
| WB | 1:500 - 1:2000 |
| IHC-P | 1:50 - 1:200 |
| IF/ICC | 1:50 - 1:100 |
| IP | 1:20 - 1:50 |

Immunogen Information

Gene ID

4254

Swiss Prot

P21583

Immunogen

Recombinant protein of human KITLG

Synonyms

SF; MGF; SCF; SLF; DCUA; FPH2; FPHH; KL-1; Kitl; WS2F; SHEP7; DFNA69; KITLG

Contact



www.abclonal.com

Product Information

Source

Mouse

Isotype

IgG

Purification

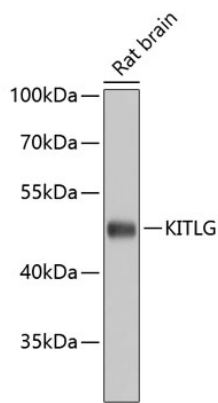
Affinity purification

Storage

Store at 4°C. Avoid freeze / thaw cycles.

Buffer: PBS with 0.02% sodium azide,pH7.3.

Validation Data



Western blot analysis of lysates from rat brain, using KITLG Mouse mAb (A10999).