

## LRP1 Monoclonal Antibody

<b>Catalog No.</b>	A10963	<b>Category</b>	Monoclonal Antibodies
<b>Applications</b>	WB, IHC, IF, IP	<b>Observed MW</b>	78kDa
<b>Cross-reactivity</b>	Human, Mouse, Rat	<b>Calculated MW</b>	31kDa/504kDa

### Immunogen Information

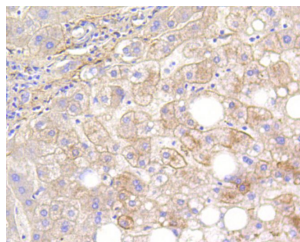
<b>Immunogen</b>	Recombinant protein of human LRP1
<b>Gene ID</b>	4035
<b>Swiss prot</b>	Q07954
<b>Synonyms</b>	A2MR;APOER;APR;CD91;IGFBP3R;KPA;LRP;LRP1A;TGFB R5;A2MR;APOER;APR;CD91;IGFBP3R;LRP;LRP1A;TGFB R5

### Product information

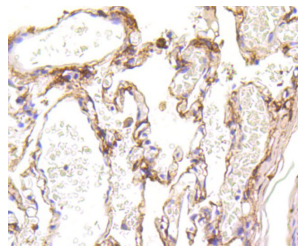
<b>Source</b>	Rabbit
<b>Isotype</b>	IgG
<b>Purification method</b>	Affinity purification
<b>Storage</b>	Store at -20°C. Avoid freeze / thaw cycles. Buffer: PBS with 0.02% sodium azide, 50% glycerol, pH7.3.

### Background

This gene encodes a member of the low-density lipoprotein receptor family of proteins. The encoded preproprotein is proteolytically processed by furin to generate 515 kDa and 85 kDa subunits that form the mature receptor (PMID: 8546712). This receptor is involved in several cellular processes, including intracellular signaling, lipid homeostasis, and clearance of apoptotic cells. In addition, the encoded protein is necessary for the alpha 2-macroglobulin-mediated clearance of secreted amyloid precursor protein and beta-amyloid, the main component of amyloid plaques found in Alzheimer patients. Expression of this gene decreases with age and has been found to be lower than controls in brain tissue from Alzheimer's disease patients.



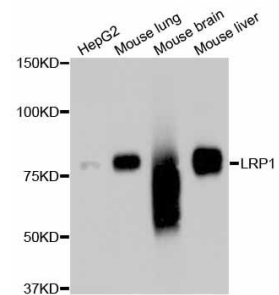
Immunohistochemistry of paraffin-embedded human liver using LRP1 antibody (A10963) at dilution of 1:100 (40x lens).



Immunohistochemistry of paraffin-embedded human lung using LRP1 antibody (A10963) at dilution of 1:100 (40x lens).

### Recommended Dilutions

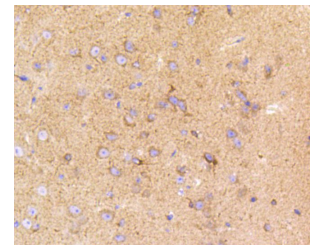
WB	1:10000 - 1:20000
IHC	1:50 - 1:100
IF	1:50 - 1:100
IP	1:20 - 1:50



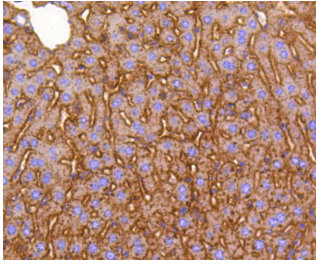
Western blot analysis of extracts of various cell lines, using LRP1 antibody (A10963).

Secondary antibody: HRP Goat Anti-Rabbit IgG (H+L) (AS014) at 1:10000 dilution.

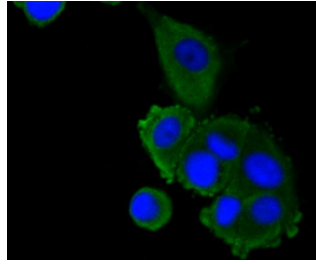
Lysates/proteins: 25ug per lane.  
Blocking buffer: 3% nonfat dry milk in TBST.



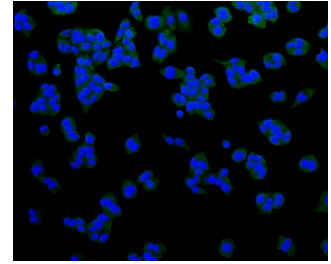
Immunohistochemistry of paraffin-embedded mouse brain using LRP1 antibody (A10963) at dilution of 1:100 (40x lens).



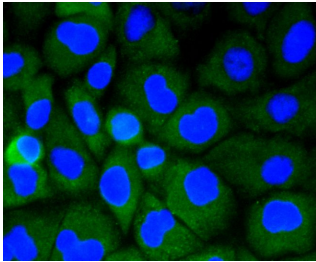
Immunohistochemistry of paraffin-embedded mouse liver using LRP1 antibody (A10963) at dilution of 1:100 (40x lens).



Immunofluorescence analysis of MCF-7 cells using LRP1 antibody (A10963).



Immunofluorescence analysis of HeLa cells using LRP1 antibody (A10963).



Immunofluorescence analysis of HUVEC cells using LRP1 antibody (A10963).